

We Call It

Building Science.

You Can Call It

Peace of Mind.

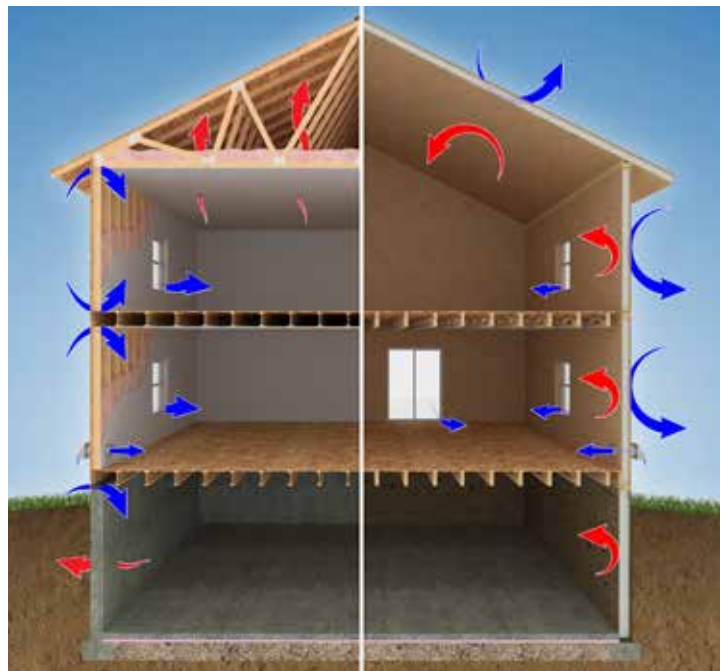
Now more than ever, building an energy-efficient home is important. EPS homes are designed and built to keep the harsh outside elements out.

You'll enjoy a comfortable high-performance home with reduced drafts and ultimate pest control.

EPS homes are engineered and built with Structural Insulated Panels. SIPs are one of the most airtight and well insulated building systems available.

An EPS SIP home will use less energy to heat and cool, which can reduce energy costs by as much as 50% when compared to conventional construction.

For us, building science is building quality, building comfort and building value. Call your EPS dealer today to learn more about building science and how an EPS Home can add more comfort to your lifestyle!



epsbuildings.com





EPS ORIGINALS

DESIGN IDEA BOOK



GET STARTED

Single Family

- Jackson 3
- Chandler 4
- Clare Marie 5
- Manning 6
- Everly 7
- Kaitlyn Raye 8
- Taylor 9
- Boulder 10
- Landon 11
- Baylee 12
- Houston 13
- Brooklyn 14
- Spirit 15
- Water's Edge 16

Shouse

- Cedar Ridge 18
- Auburn 19
- Cherry Ridge 20
- Garret Ridge 21
- Oak 22
- Mayfield 23
- Rose Mount 24
- Maple Ridge 25

Cabins

- Cypress 27
- Aspen 28
- Skylar Ridge 29
- Alpine 30
- Rushmore 31
- Sheppard's Glenn 32

Copyright 2023-EPS: All floorplans, designs and renderings are the exclusive property of Energy Panel Structures, for use by Authorized Dealers only. All other uses prohibited.

Getting started with the Design of Your Dream Home

"If you don't know where you are going, how will you know when you get there?"

Most new home owners have many ideas of what they want to include in their new home. Getting it all down on paper and into a final design takes time and important considerations.

Trying to find the perfect home design can be difficult and most plans will need to be adjusted or owners can ask for a complete, customized design.

Important considerations include: your current and future lifestyle, views and opportunities offered by the building site, traffic flow through the home and building codes. We have organized a list of other considerations to help you in the design process.

EPS has an on-staff designer and the ability to provide you with a complete floor plan, concept drawing, and 3D rendering.

Dreaming of a new home is fun and exciting. A complete and accurate design will assure you get



an accurate quote for your building project and it will give you peace of mind knowing exactly what the outcome will be.

Considerations for your new home design include:

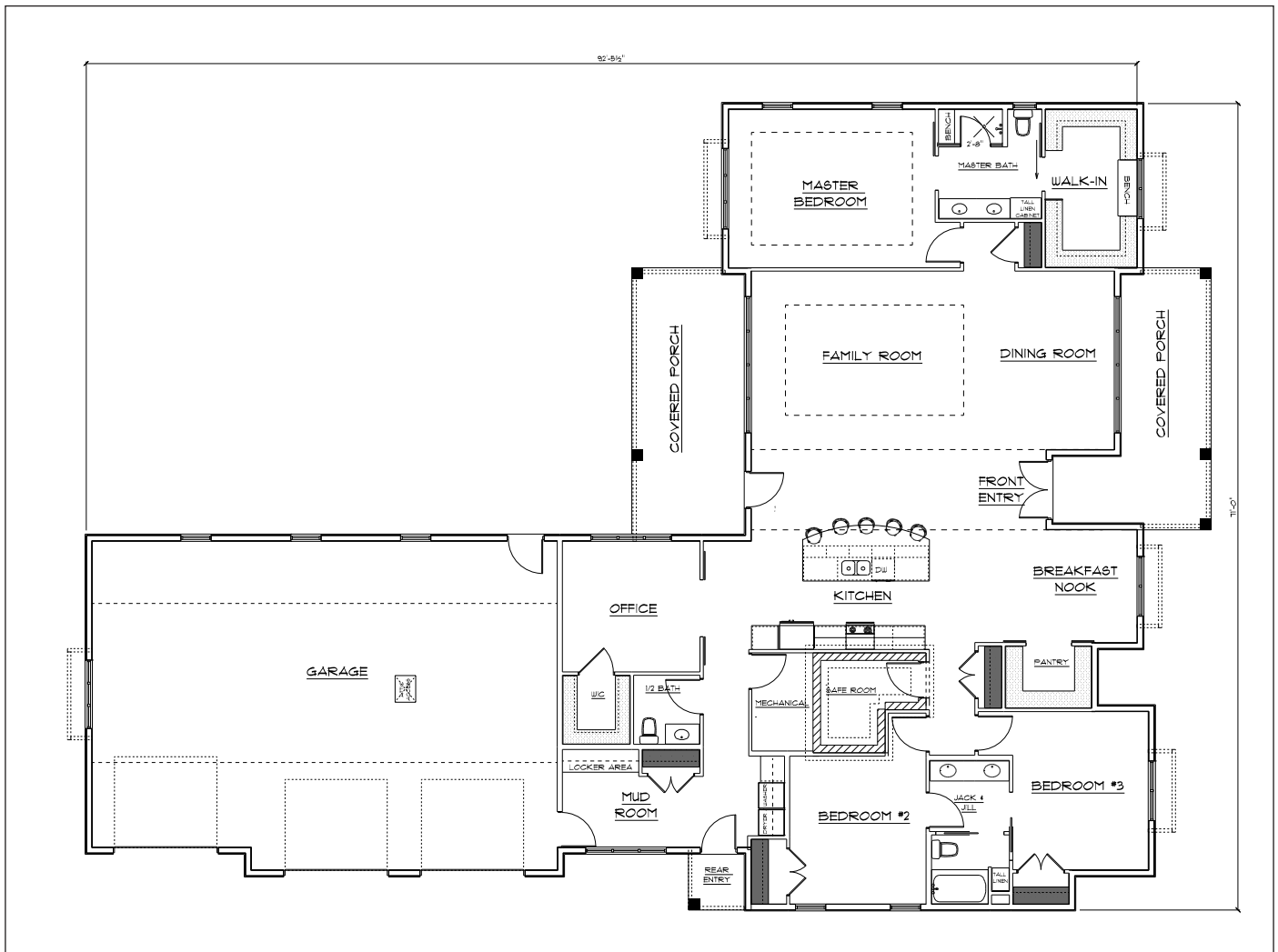
1. How much do you plan to invest in your project?
2. Do you have a list of wants vs. needs?
3. What is offered by the site location for views and elevations? Are there special zoning, use ordinances or covenants? Are there other considerations for noise, wind, trees or neighbors?
4. Will it fill your current and future lifestyle.
5. Do you prefer an open living plan or separate dining and living spaces?
6. What is important about the size of the bedrooms?
7. What size of storage is needed?
8. What size of laundry is needed and what is the preferred location?
9. Do you entertain frequently?
10. Will there be a garage?
11. How many bathrooms and what are your bathroom needs?
12. Is there a preference for location of electrical outlets or specialized wiring needed?
13. Will there be outdoor living space: decks, patios, etc.
14. What size of kitchen is needed and what appliances are needed?
15. Do you need special rooms like home office, work room or home theater?
16. Do you plan to include other special features such as a fireplace or entertainment center?
17. Are there any special requirements for interior or exterior plumbing or faucets?
18. Do you want to include in-floor heating, heat pumps or other ventilation?

Single Family: Jackson



Style: Executive ranch
Sq. Ft.: 2,814
Bedrooms: 3 plus office
Bathrooms: 3

Description: Perfect for a corner or deep lot, this executive ranch floor plan boasts 3 bedrooms plus a home office. It features a roomy open kitchen/dining/family area designed to entertain! A cozy breakfast nook and large walk-in pantry make this not only stylish but practical. As shown, designed to be slab on grade and incorporates a main floor safe room.

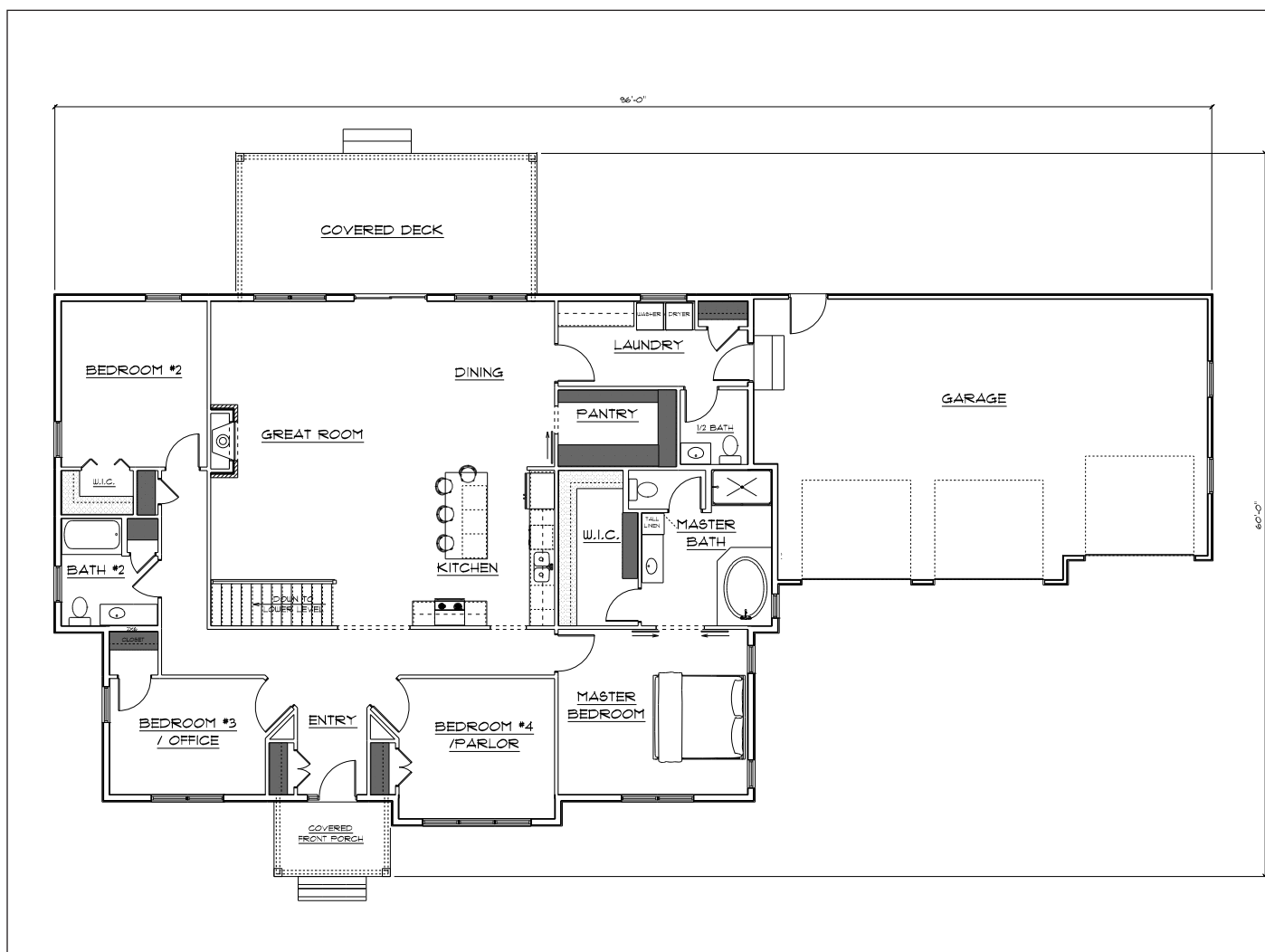


Single Family: Chandler



Style: Executive ranch
 Sq. Ft.: 2,395
 Bedrooms: 3 plus office
 Bathrooms: 2 full plus 1 half

Description: Entertain large groups or just relax in the space in the combined living/dining/kitchen/great room. Separate bedroom wings allow flexible living and work well to accommodate guests or family members. Other convenience features include a large walk-in pantry and large utility room/mud room located directly off the garage.



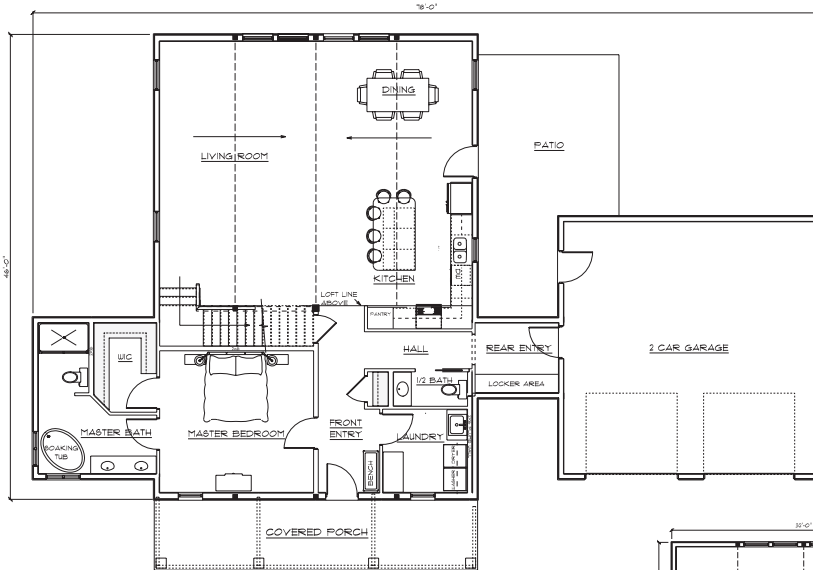
Single Family: Clare Marie

Sq. Ft.: 2,320, 1,770/main & 550/up

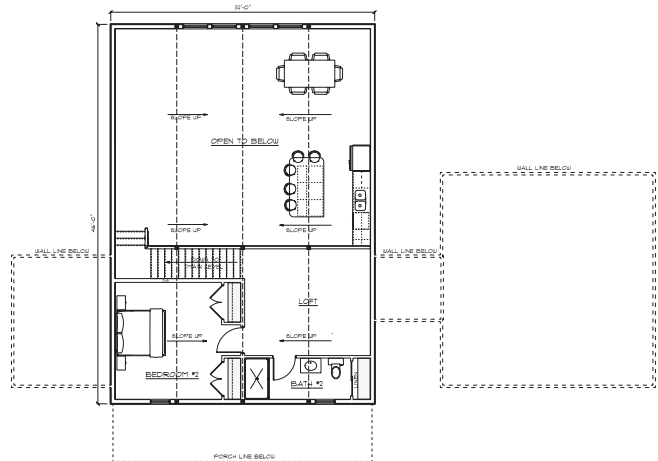
Bedrooms: 3

Bathrooms: 2 full

Description: This farm house style plan combines old world craftsmanship with modern comforts. It features an open great room with soaring vaulted ceilings and windows. The main floor master bedroom has a sprawling master bath suite and large walk in closet. The second story has not only an open loft area but an additional bedroom and bath.



Main Level

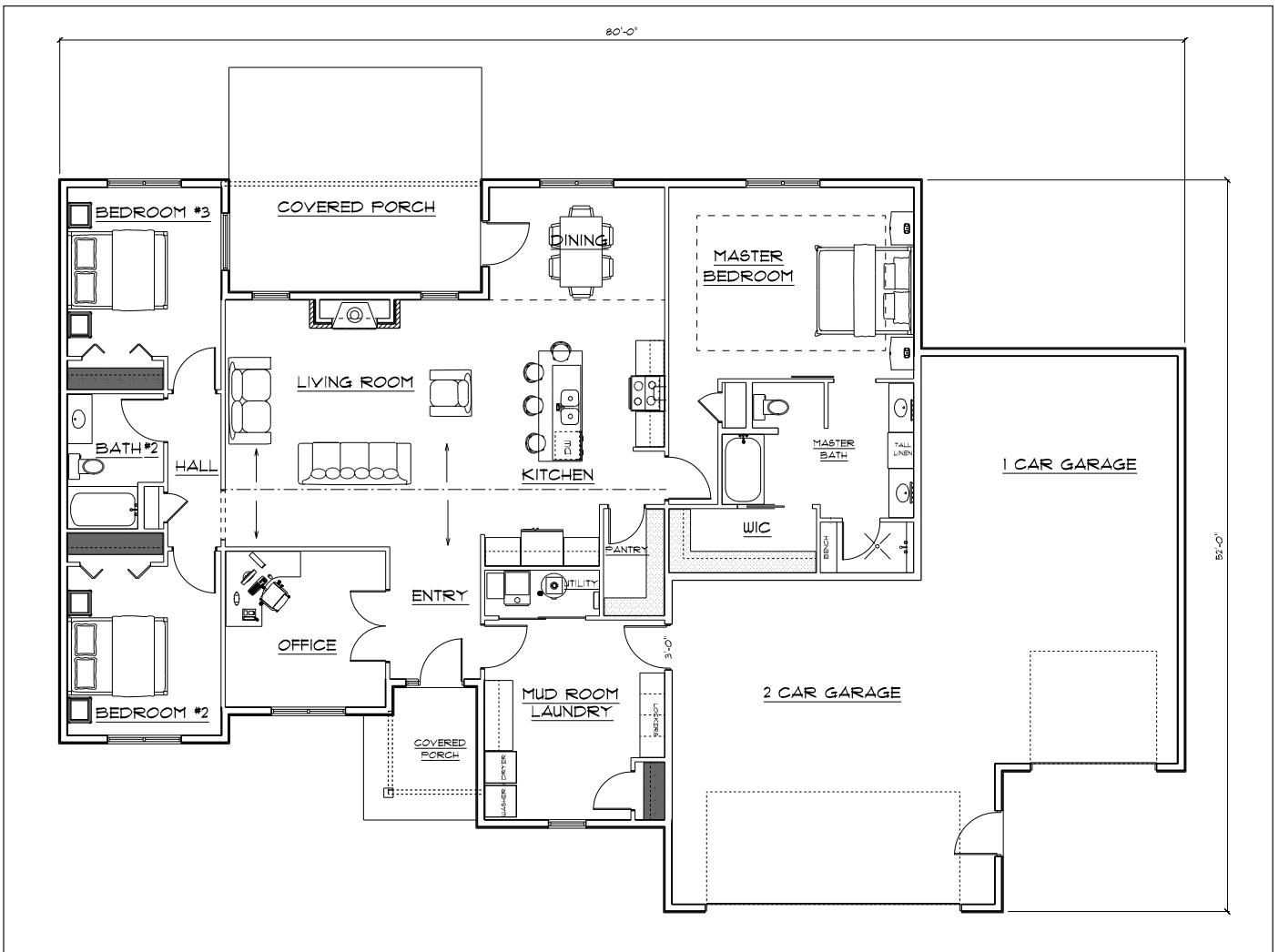


Single Family: Manning



Style: Executive ranch
 Sq. Ft.: 2,140
 Bedrooms: 3 plus office
 Bathrooms: 2 full

Description: A true executive-style home that features plenty of living space. Features a separate master suite wing. Overflow space abounds onto a covered deck area off the dining room. Other convenience features are a large walk-in pantry for storage plus a large main floor utility/mud room.

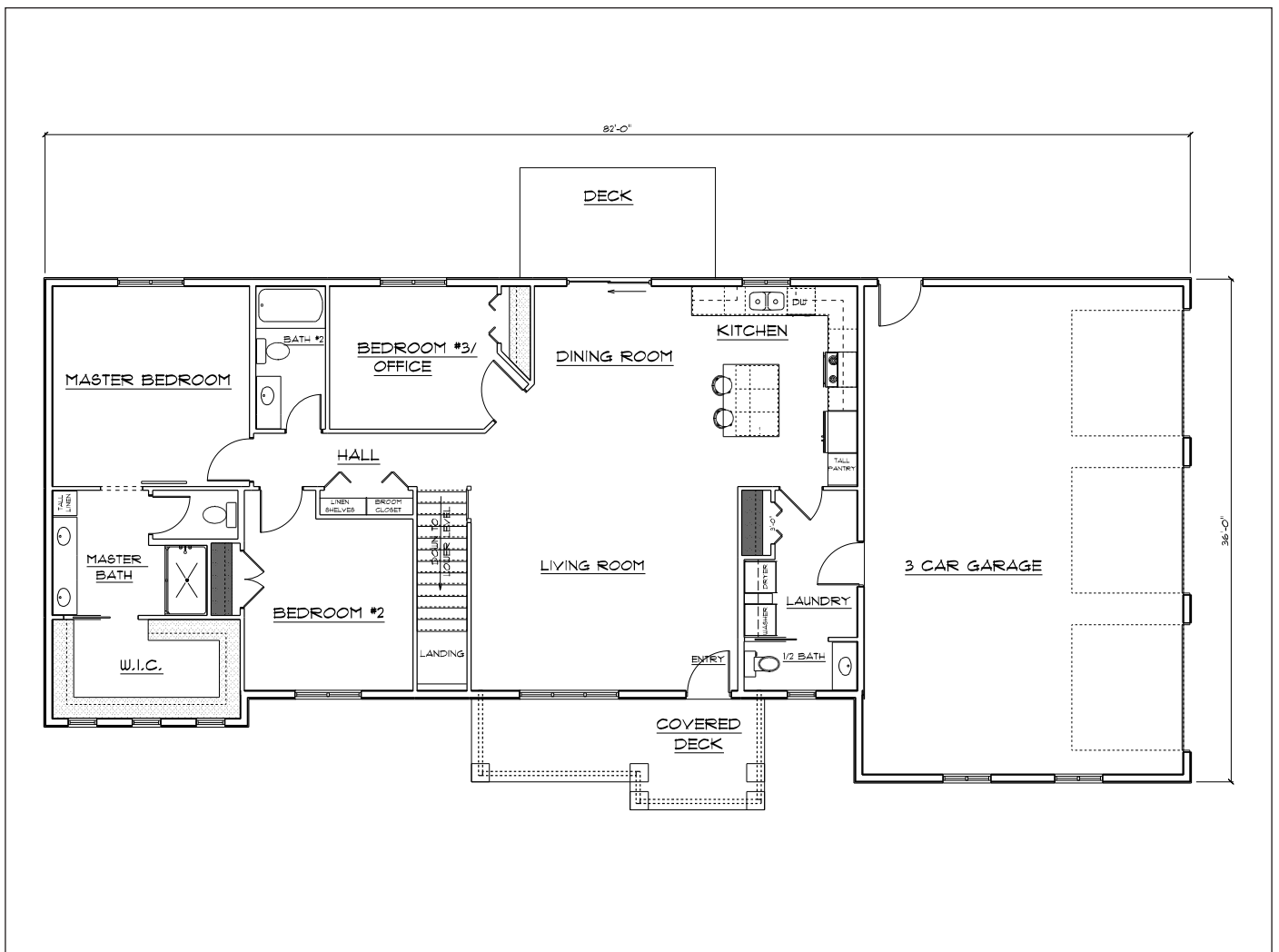


Single Family: Everly



Style: Ranch
Sq. Ft.: 1,790
Bedrooms: 2 and 1-den/bedroom
Bathrooms: 2 full plus 1 half

Description: This classic ranch fits wants, needs and budgets for many families! Escape day-to-day life in the large master suite featuring a walk-in shower and large walk-in closet. The main floor utility room is conveniently located right off the kitchen/garage and has a half bath.

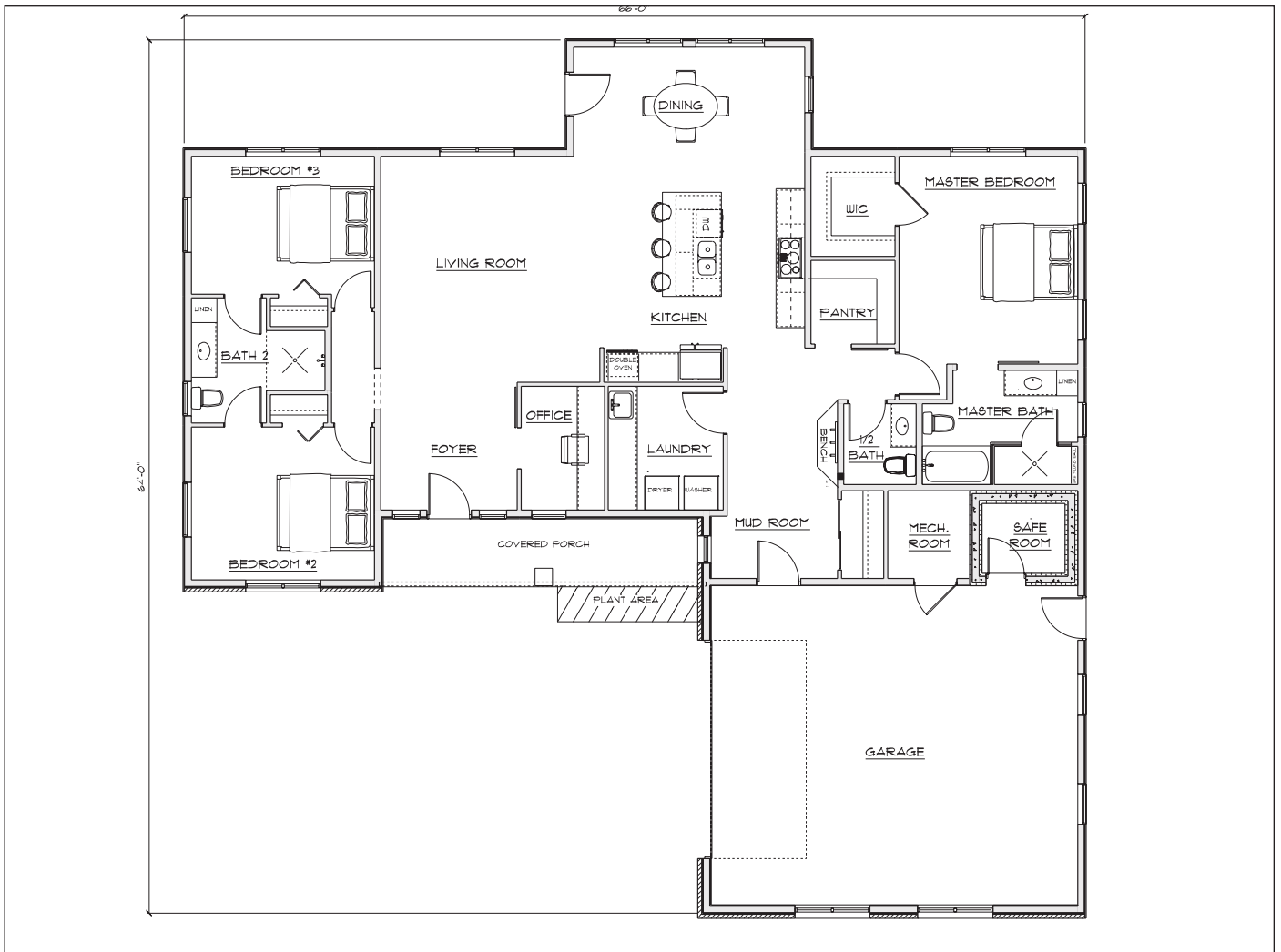


Single Family: Kaitlyn Raye



Style: Executive ranch
 Sq. Ft.: 1,780
 Bedrooms: 3 plus office
 Bathrooms: 2 plus 1 half

Description: This design incorporates an open concept featuring the living, dining and kitchen areas. Just off the kitchen is a large walk-in pantry. Designed for today's lifestyles, a large home office has been included right off the garage for easy access.

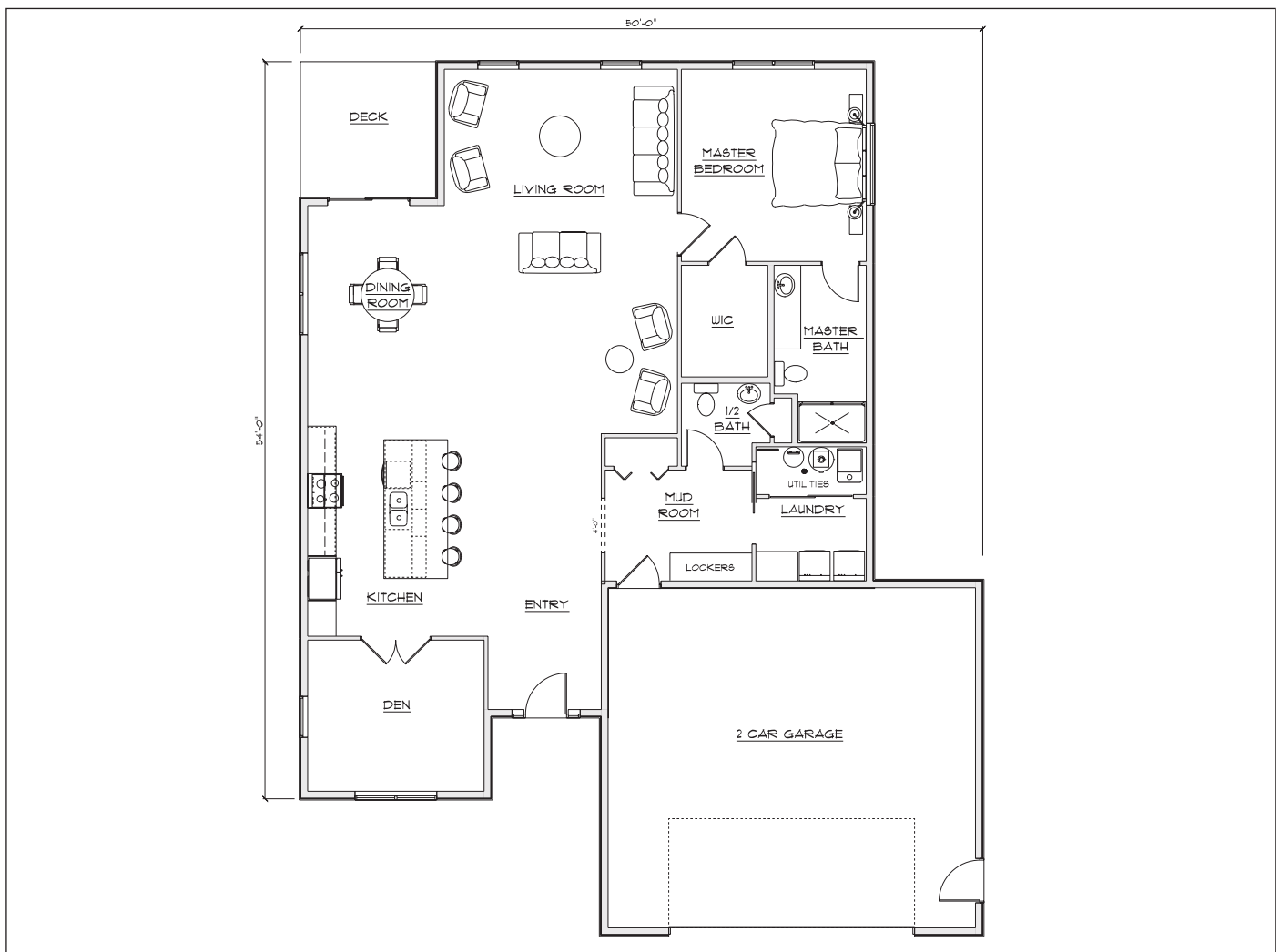


Single Family: Taylor



Style: Narrow lot, ranch
Sq. Ft.: 1,680
Bedrooms: 1
Bathrooms: 1 plus 1 half

Description: Calling all empty nesters! This narrow lot floor plan gives you all the easy living features including a large master bedroom with walk-in closet, an open kitchen/living area and an eat-in breakfast nook. If needed, a flexible basement design allows for additional bedrooms and living space.

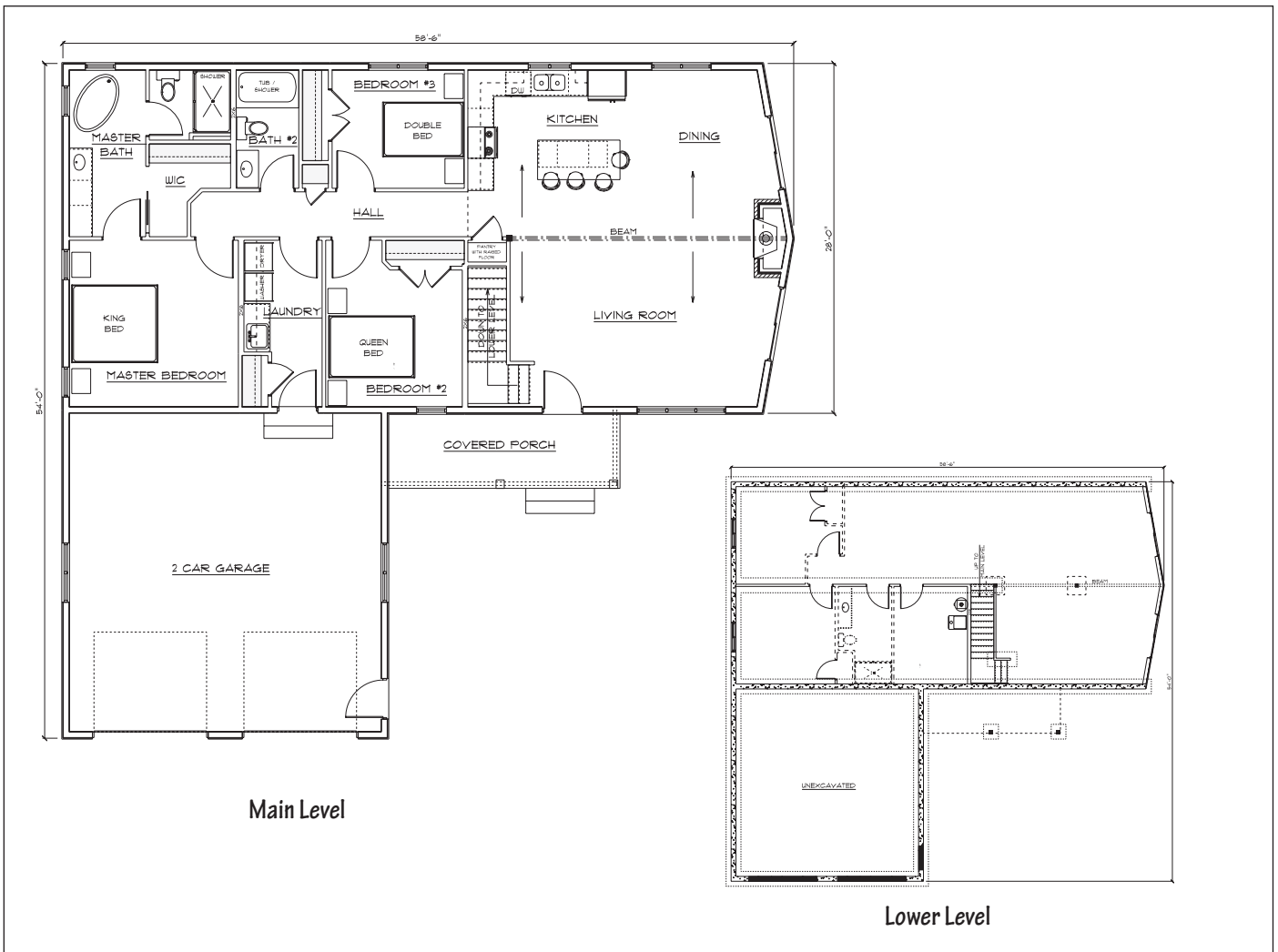


Single Family: Boulder



Style: Prow
 Sq. Ft.: 1,611
 Bedrooms: 3
 Bathrooms: 2 full

Description: A great single-story view maximizer featuring a large open great room with open kitchen dining room. Relax and enjoy all the views outside of the large trapezoid windows. Whether a full-time residence or a weekend getaway, the Boulder plan is extremely flexible.



Single Family: Landon



Style: Ranch
Sq. Ft.: 1,553
Bedrooms: 3
Bathrooms: 2 full

Description: An ideal square footage for many family lifestyles and budgets. This floor plan features a separate master bedroom and bath suite. The open kitchen and dining room create plenty of space for active lifestyles.

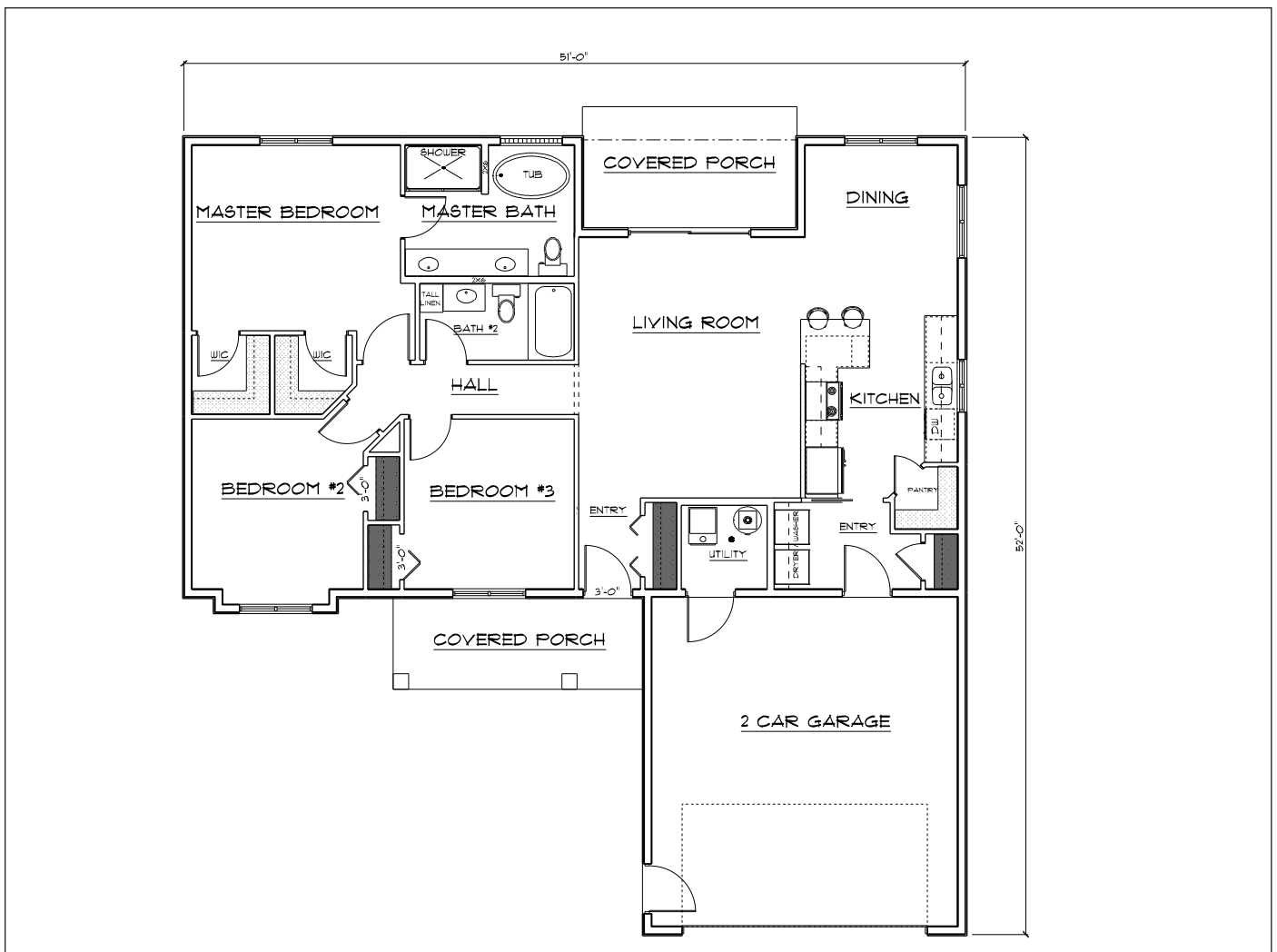


Single Family: Baylee



Style: Short lot, ranch
 Sq. Ft.: 1,467
 Bedrooms: 3
 Bathrooms: 2 full

Description: This floor plan maximizes square footage! It features three bedrooms and two bathrooms in just over 1400 sq. feet, plus an open great room/kitchen area. Special feature is a main-floor laundry room.

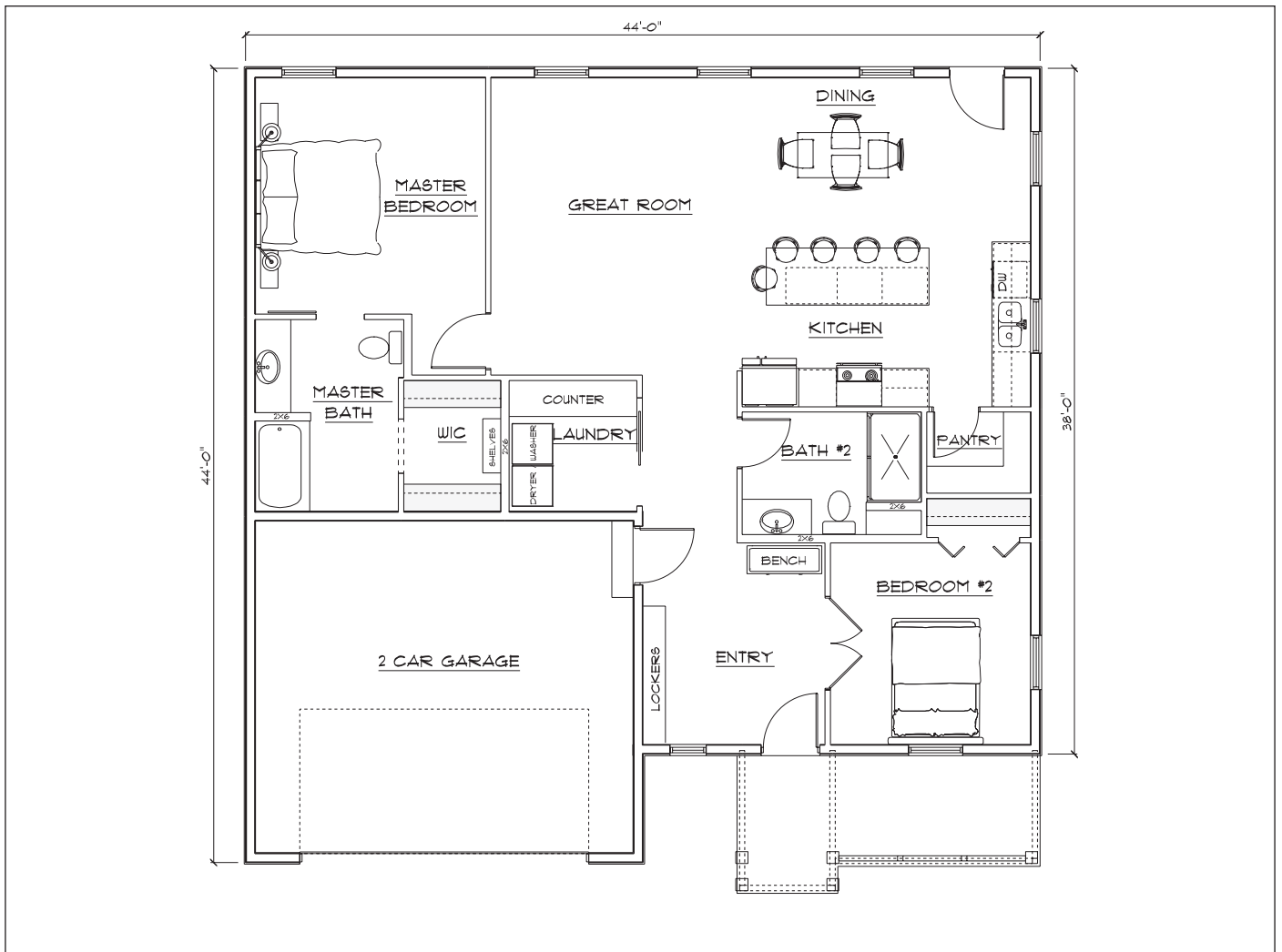


Single Family: Houston



Style: Ranch
Sq. Ft.: 1,403
Bedrooms: 3
Bathrooms: 2 full

Description: This floor plan will fit well on many lots and at just over 1400 square feet has all the features you want! From a formal foyer area to a spacious Kitchen/Great Room, this design has everything you need in an affordable square footage range.

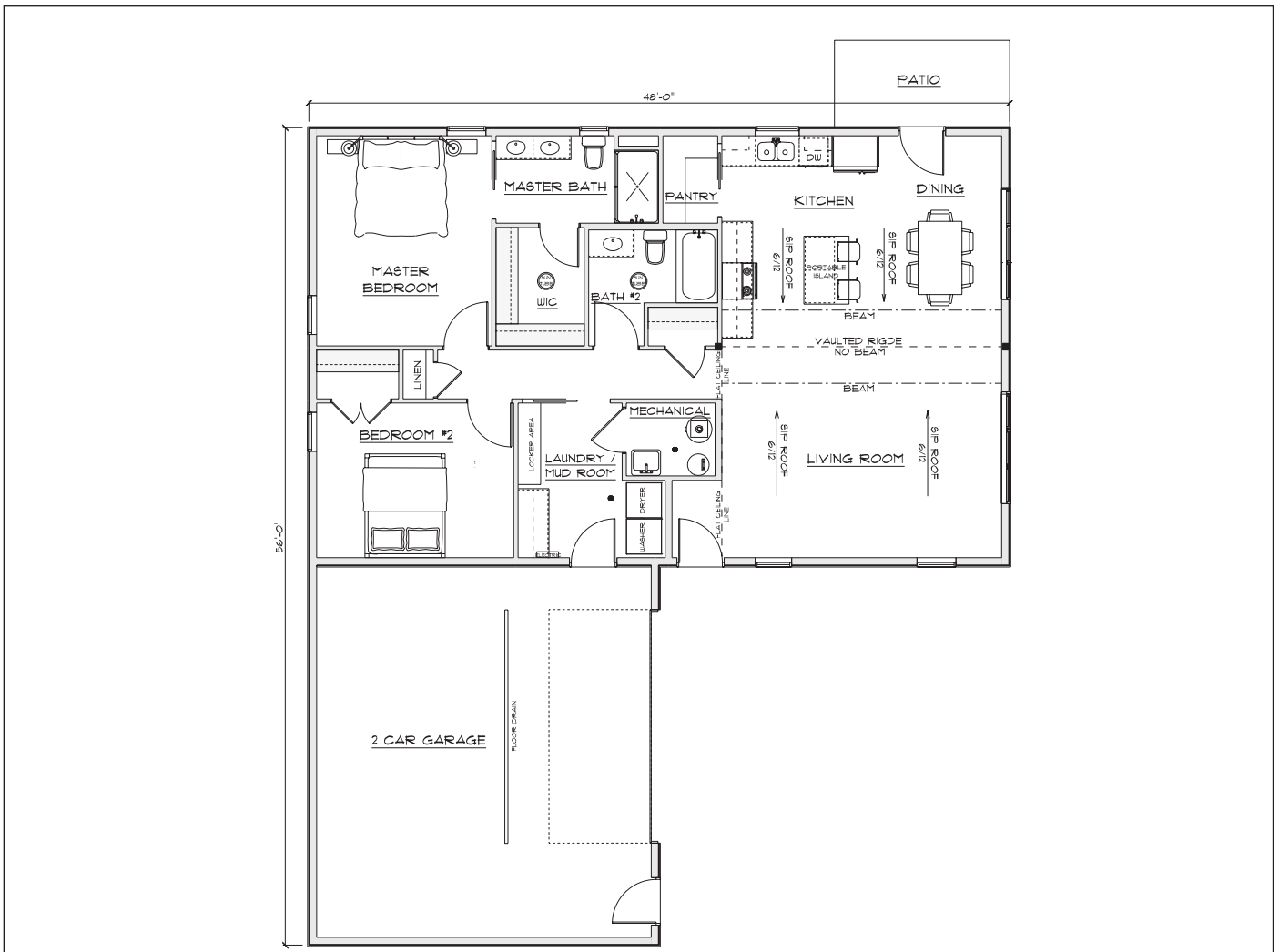


Single Family: Brooklyn



Style: Ranch
 Sq. Ft.: 1,357
 Bedrooms: 2
 Bathrooms: 2

Description: This floor plan is extremely versatile and makes the most of the great room. Featuring an open kitchen and living area, the Brooklyn has been designed to use SIP roof panels (Structural Insulated Panels) throughout the great room ceiling to create a dramatic vaulted ceiling while still preserving maximum energy efficiency.

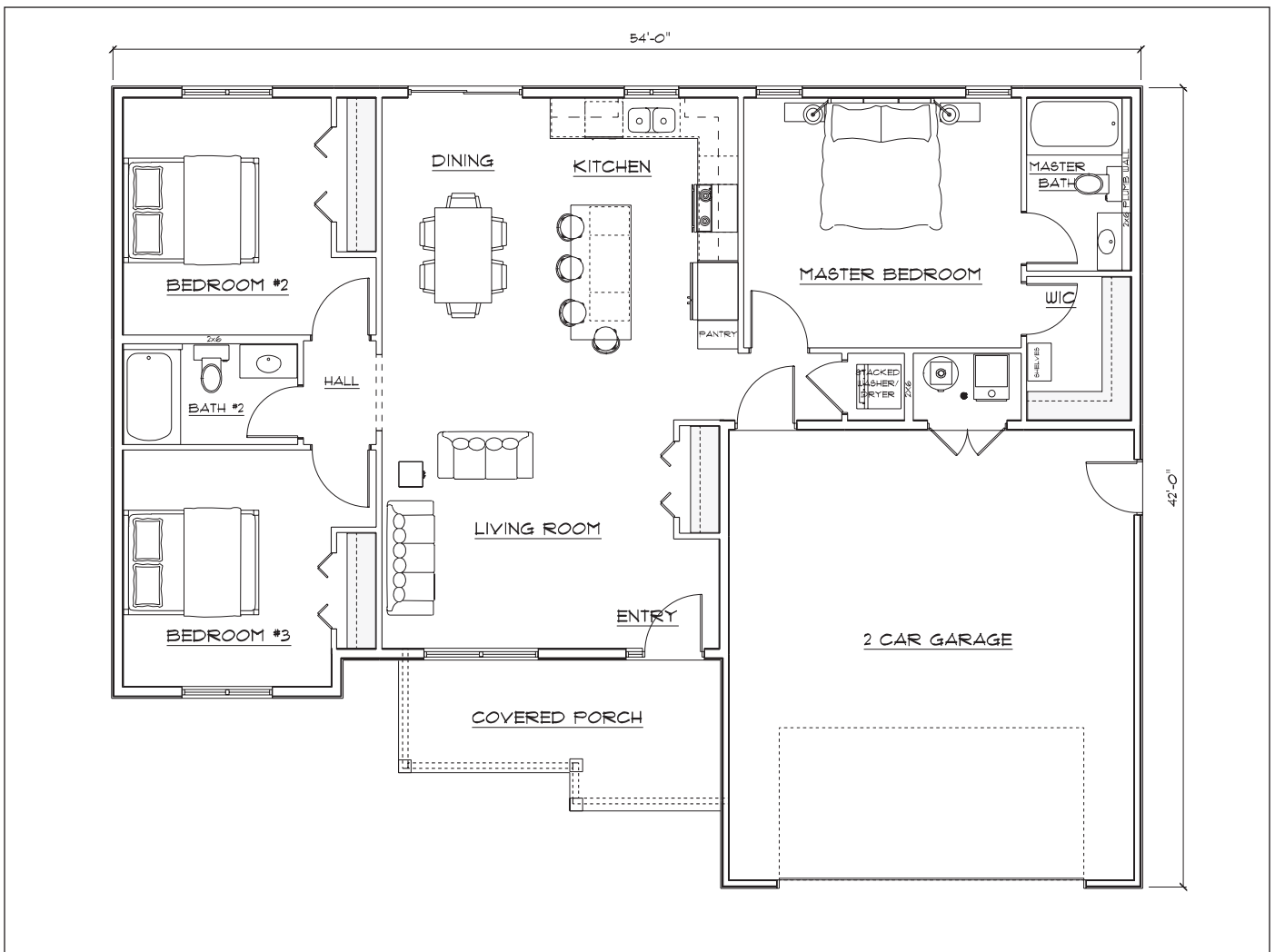


Single Family: Spirit



Style: Ranch
Sq. Ft.: 1,350
Bedrooms: 3
Bathrooms: 2 full

Description: This floor plan makes the most of its square footage. It features an open concept between kitchen/dining room and living room that creates an open, airy effect. Includes large walk-in closet and a front-loaded garage.

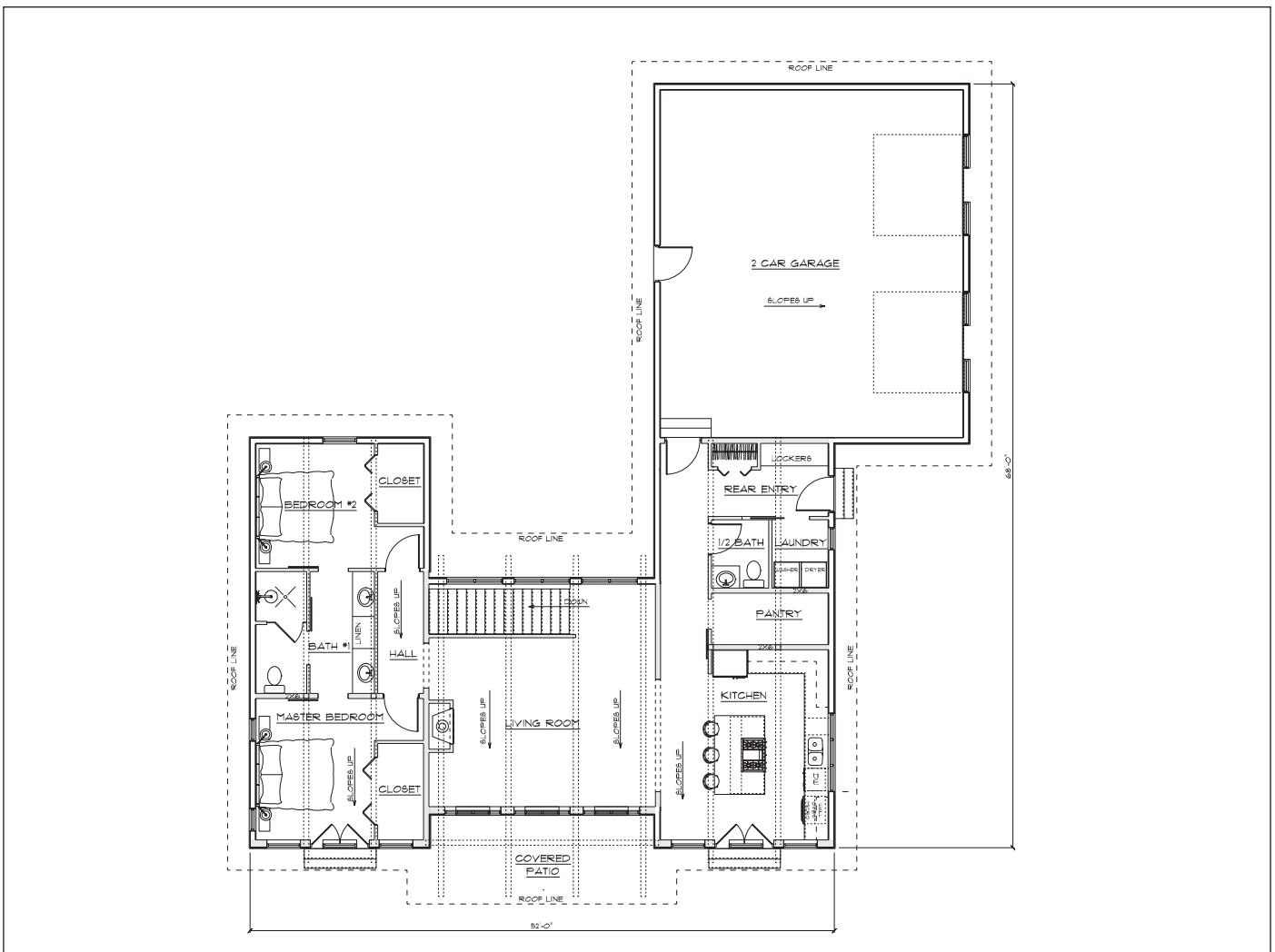


Single Family: Water's Edge



Style: Modern
Sq. Ft.: 1,290
Bedrooms: 2
Bathrooms: 2 full

Description: Open spaces and minimization of hallways. Can accommodate a full basement, crawl-space or slab foundation. Design features full-length windows, large overhangs and exposed wood beams. Designed by Robinson Residential Design.



Why Compromise?

1.

Home: Stick-frame

Shop: Post-frame

Comments: Both of these options are completely pre-engineered building systems which means from top to bottom they are made for long-term performance and value.



EPS Offers Three Choices of Building Systems For Your New Shouse or Barndominium

2.

Home: Pre-assembled stud walls or SIPs

Shop: Ladder-frame

Comments: Stud walls are made in a factory, reducing exposure to elements and reducing on-site labor. SIP construction provides superior comfort by controlling air-flow. A ladder frame building is built on concrete, is easy to insulate.



3.

Home: SIPs

Shop: SIPs

Comments: Building both with EPS Structural Insulated Panels will provide superior control of airflow, and will reduce noise and moisture which provides the maximum comfort and energy savings.



Building your new barndo or shouse with an Authorized EPS Dealer means you have choices!

Why Compromise?

The shouse or barndominium trend has grown greatly over the past several years. What was once on the fringe is now in the mainstream! With the EPS line of building products, you can have it your way. That means it will fit your needs and it will fit your budget.

Shouse: Cedar Ridge



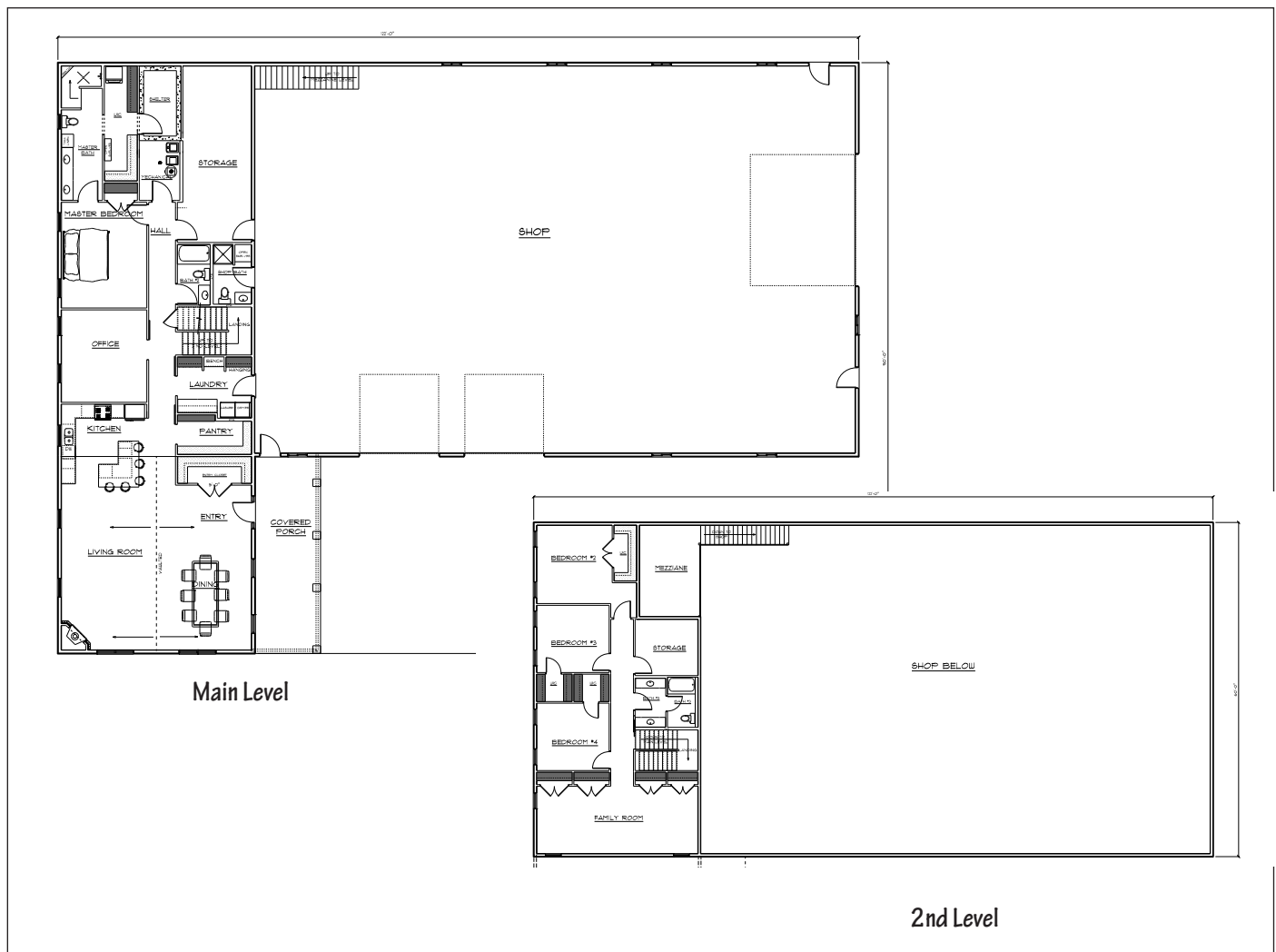
Style: Shouse, two-story

Sq. Ft.: 5,224, 2,700/main & 2,524/up

Bedrooms: 4

Bathrooms: 3 full

Description: This shouse has it all! The main floor has a large master suite, office with direct access to the shop, a large supply room, and built in shelter room; an open concept complete with trapezoid windows to maximize the view. The second floor features 3 more bedrooms, a large storage room and a huge family room capable of entertaining large groups. Shop: 90' x 60' with 20' x 16' end-wall overhead door openings and 12'x12' overhead door openings.



Shouse: Auburn



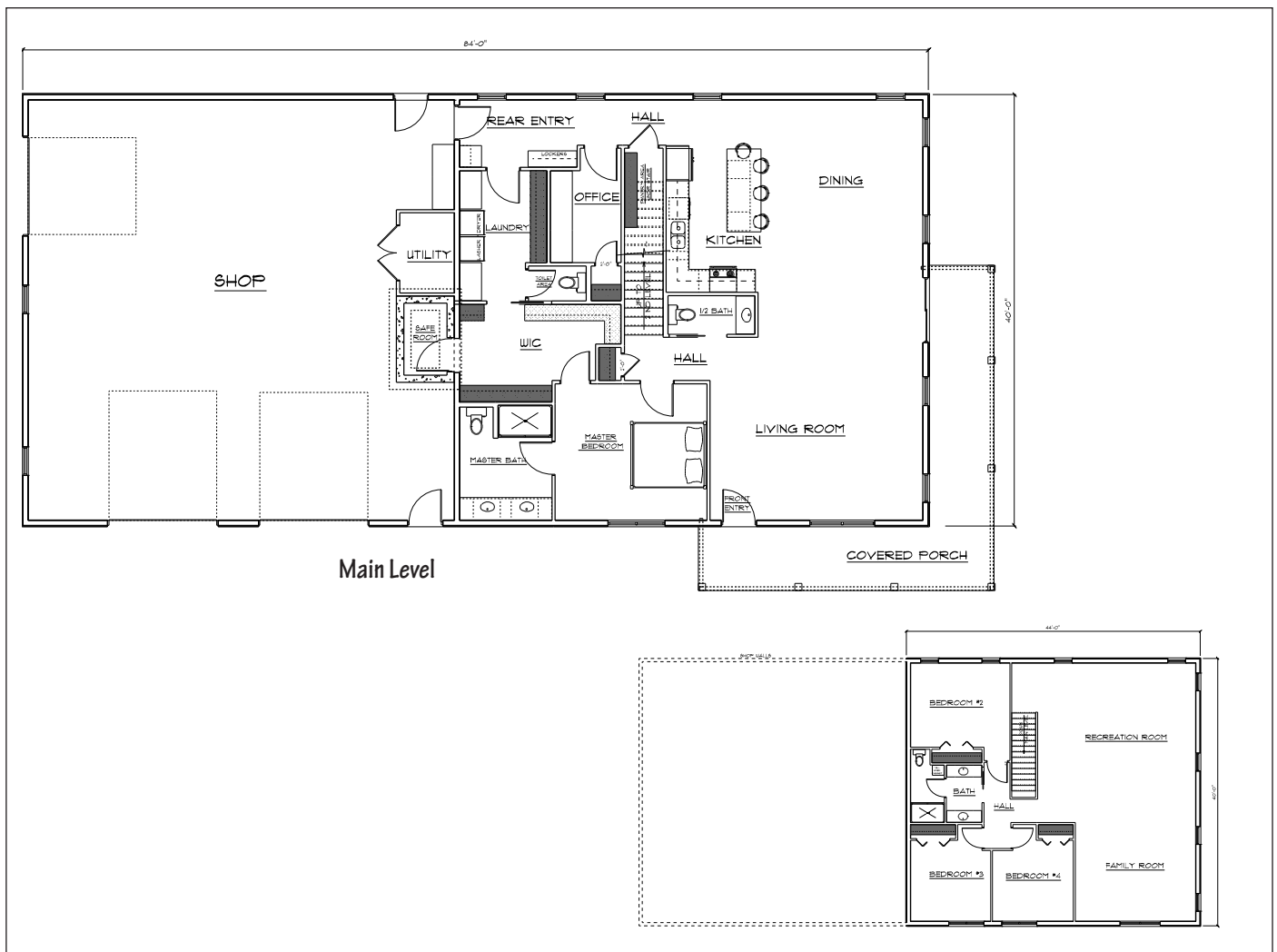
Style: Shouse, two-story

Sq. Ft.: 3,520

Bedrooms: 4

Bathrooms: 2 full

Description: Perfect for today's modern rural families. It features a utility room right off the shop with access to the master bath and bedroom. An office right off the shop allows for easy access during those busy multi-tasking days. The main floor also features an open end concept with kitchen/living area that have tall view windows to maximize a view. Level two has 3 bedrooms, a bath and a large rec area. Shop: 40' x 40' with 3 overhead doors and rec room.

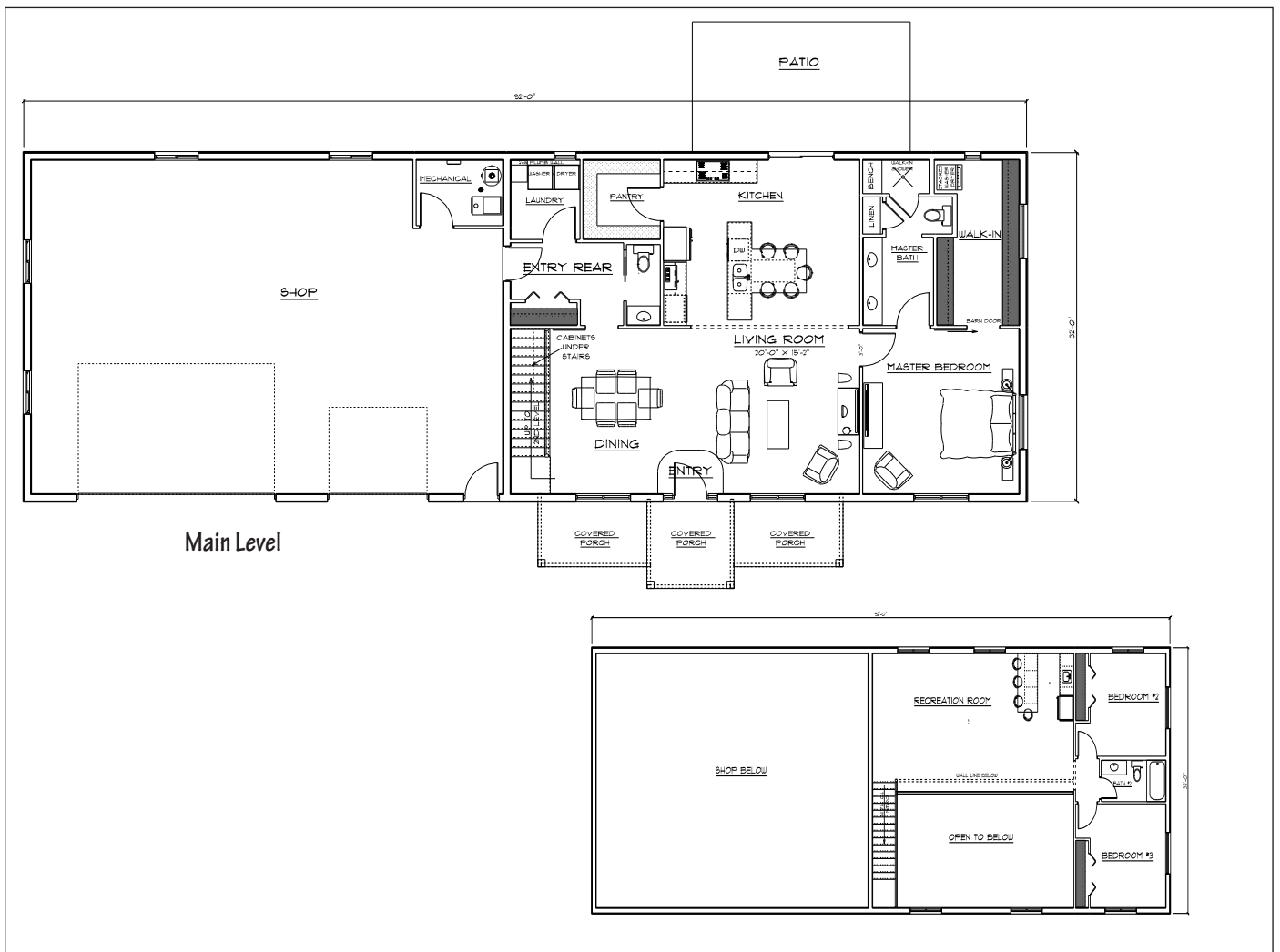


Shouse: Cherry Ridge



Style: Shouse, two-story
 Sq. Ft.: 2,496-1,536/main, 960/upper
 Bedrooms: 3
 Bathrooms: 2 full

Description: This shop/home features a large main level living area with master bedroom and bath along with an open kitchen living area and covered porch. The second level features two more bedrooms and a spacious rec room. Shop: 44' x 32.'

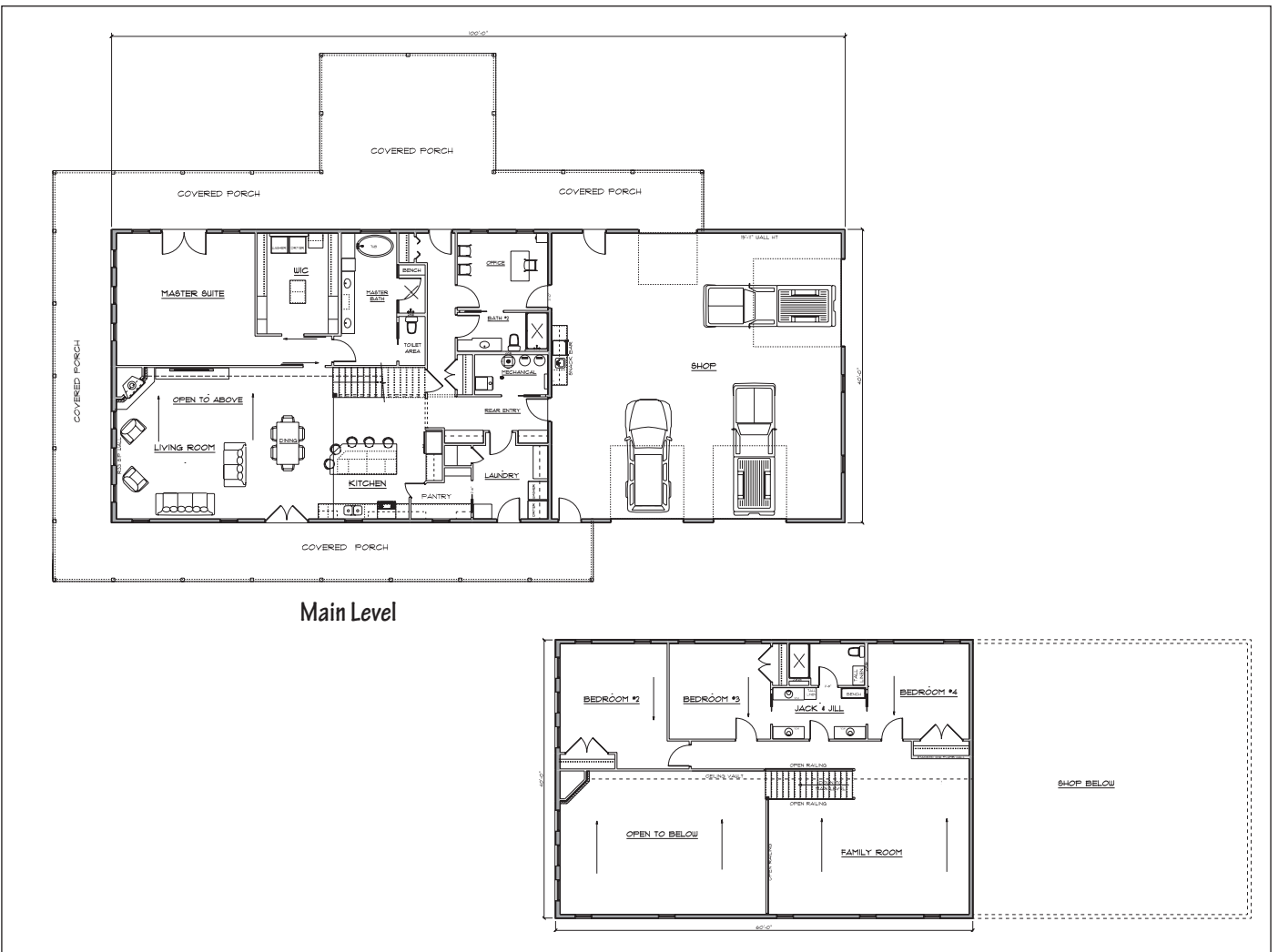


Shouse: Garret Ridge



Style: Shouse, two-story
 Sq. Ft. Main: 2,390
 Sq. Ft. Shop: 1,580
 Sq. Ft. Upper: 1,316
 Bedrooms: 4
 Bathrooms: 3 full

Description: This design makes excellent use of the living space with a main floor master bedroom and bathroom suite. It boasts a large open living and kitchen area with an open airy design between first and second floors. An office right off the shop makes for easy access between the two areas. The second floor features 3 bedrooms and a Jack-and-Jill bath plus a large family room. A huge around porch creates great outdoor living space and an great elevation.



Shouse: Oak



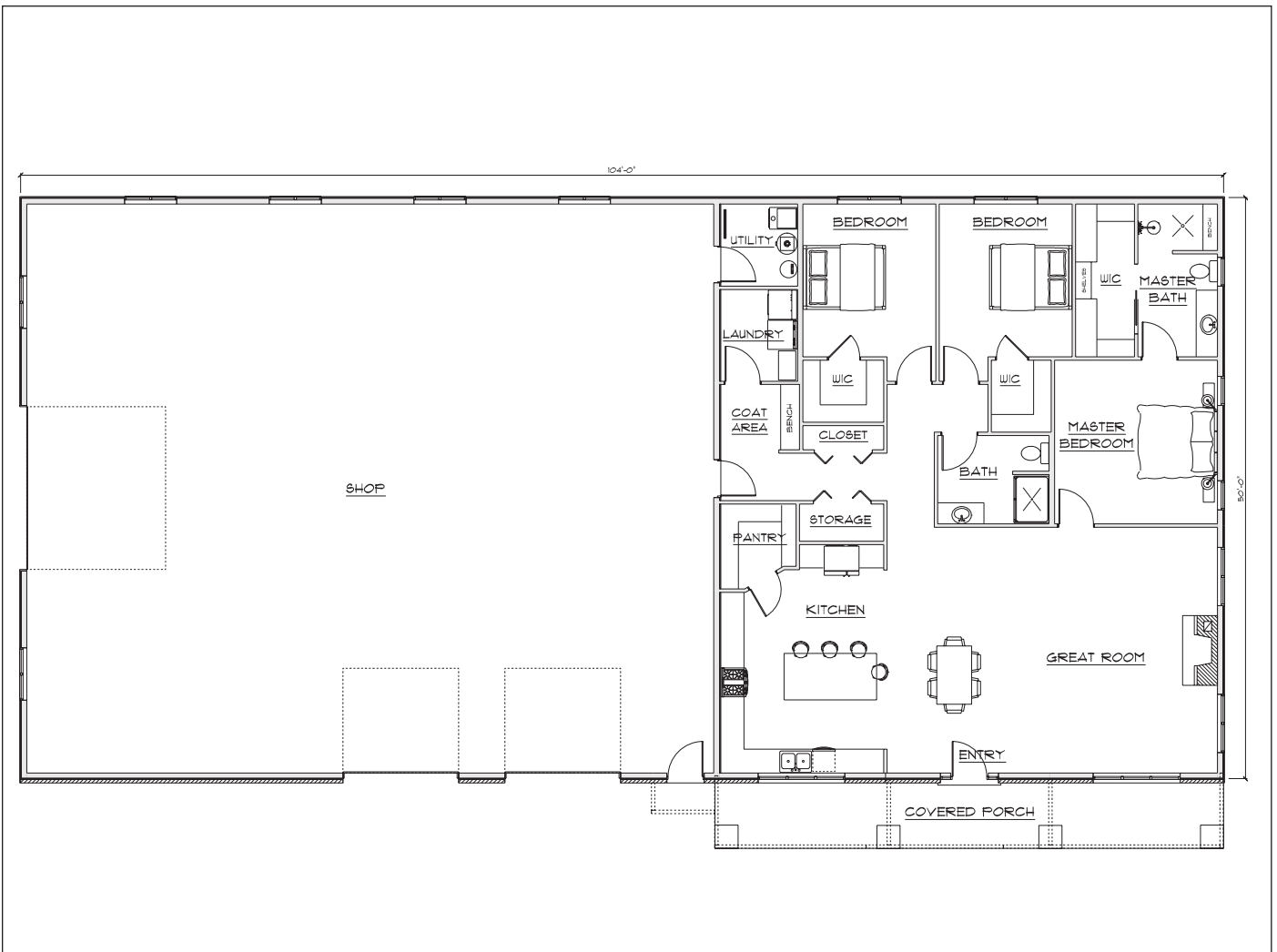
Style: Shouse

Sq. Ft.: 2,210

Bedrooms: 3

Bathrooms: 2 full plus 1 half

Description: Looking for a well balanced, single story custom home/shop combination? Here it is! This 3 bedroom, 2.5 bath open floor plan maximizes the great room concept with a wide open front living/kitchen/dining space! On the outside it incorporates a rustic exterior with a comfortable Ponderosa style porch area. Shop: 50'x60.'



Shouse: Mayfield



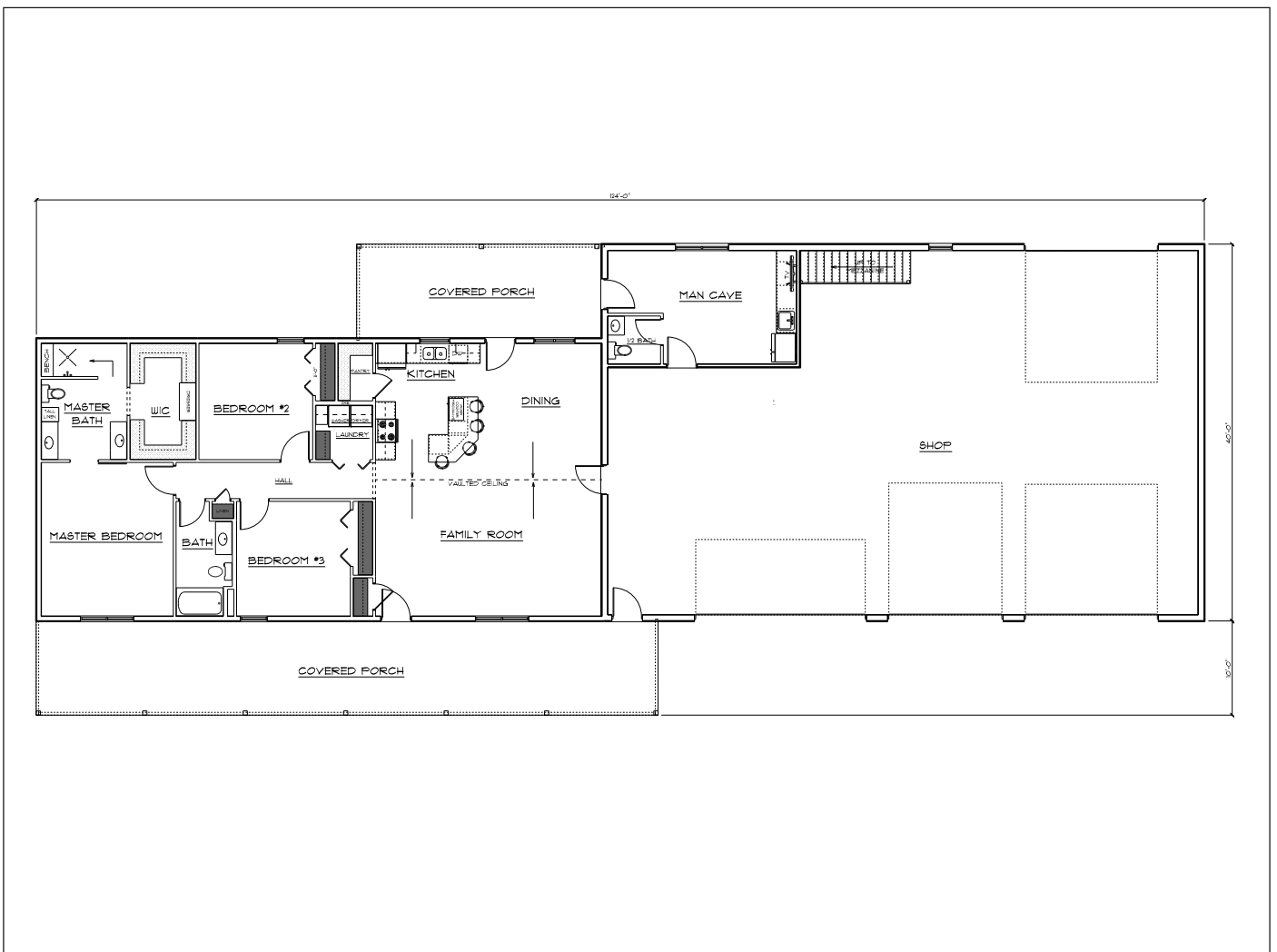
Style: Shouse

Sq. Ft.: 1,800

Bedrooms: 3

Bathrooms: 2 full

Description: This shouse features an open kitchen and family room. The master bedroom has a large walk-in closet. Enjoy a full-length, Ponderosa-style porch. Shop: 40'x 60' with 4 overhead doors, plus man cave.

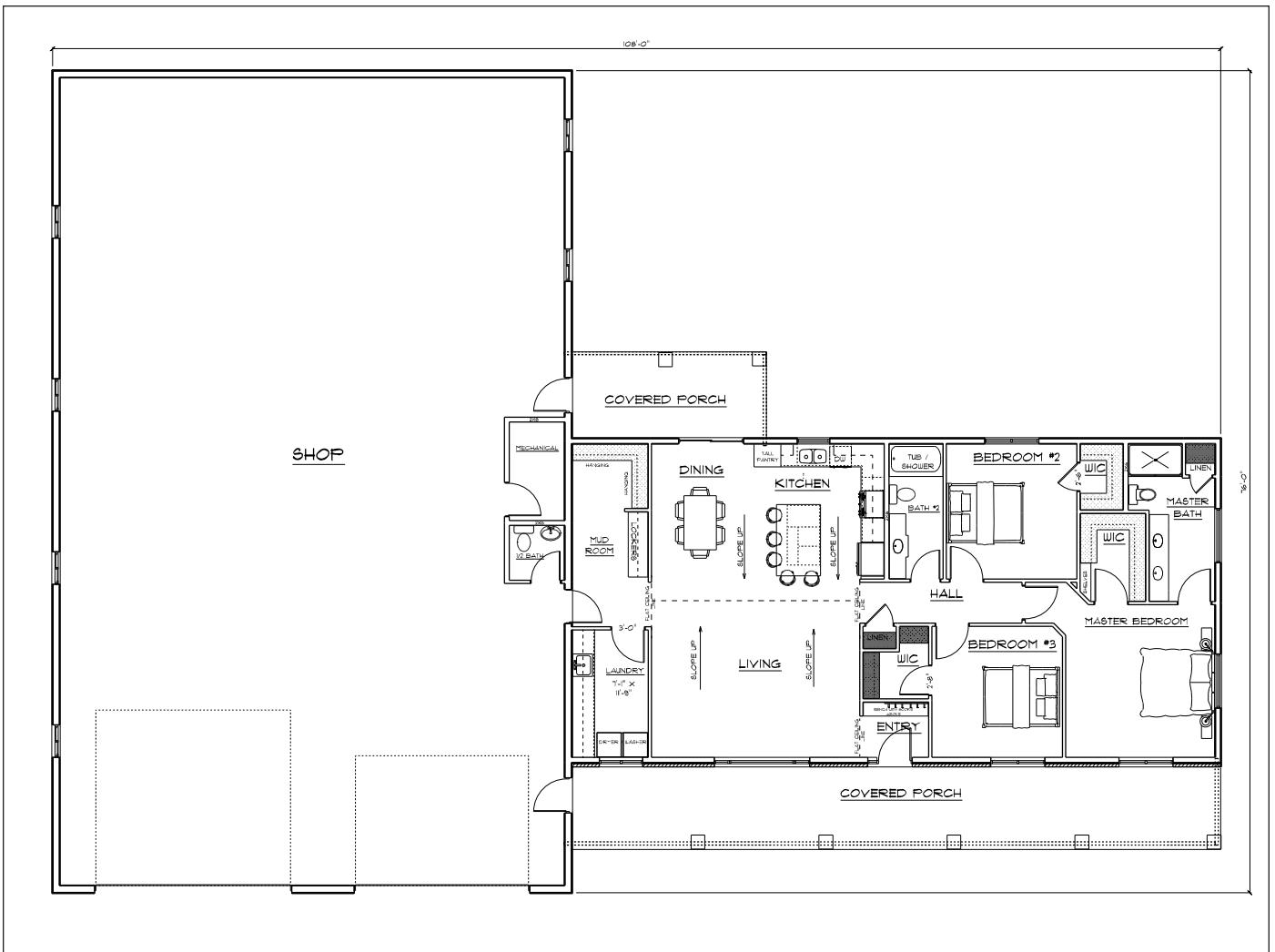


Shouse: Rose Mount



Style: Shouse
 Sq. Ft.: 1,850
 Bedrooms: 3
 Bathrooms: 2 full plus 1 half

Description: This plan incorporates an 1800 square foot contemporary 3-bedroom 2-bath home with a large Solid Core shop. The home features an open concept kitchen/living/dining area. The master bedroom has its own bathroom suite that includes a large walk-in shower. Attached laundry and mud rooms are adjacent to the shop area with a shop bath just outside the doors. Shop: 48'x76.'

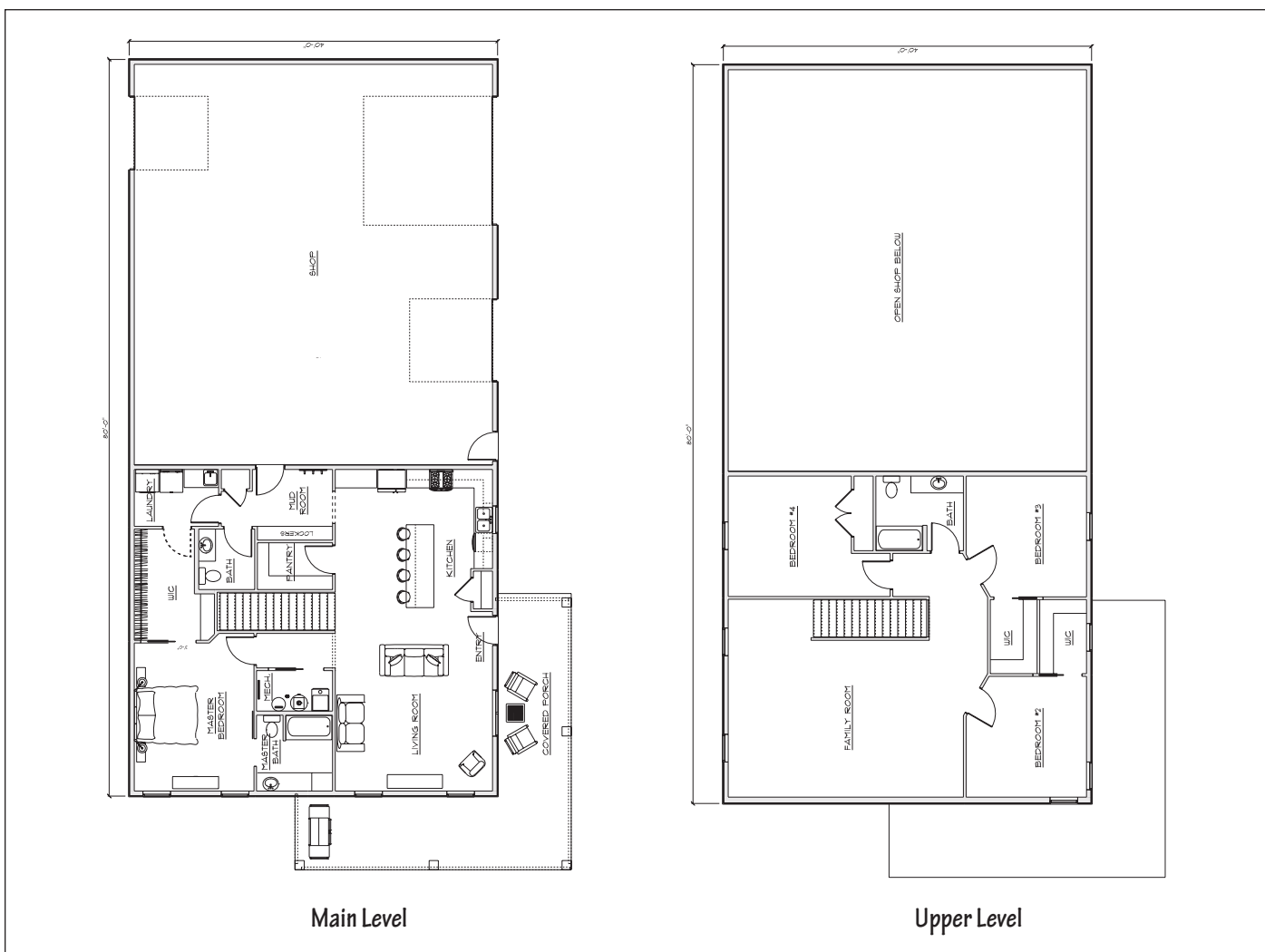


Shouse: Maple Ridge



Style: Shouse, Two-story
 Sq. Ft.: 1,449 main and upper
 Bedrooms: 2
 Bathrooms: 2 full

Description: This plan capitalizes on two highly sought after trends in today's barndominiums. First, the main floor area features a large master bed and bathroom area. Everything an owner needs on one level! From an open living area concept to mechanical and utility rooms, this floor plan checks all the boxes. The second story features another highly requested feature – a large open family room and 3 additional overflow bedrooms and bath. Shop: 40'x44.'



EPS Basement Panels



More comfort

- ▶ Wood walls eliminate the damp "musties" that often accompany a concrete wall.
- ▶ Wood foundations make basements warmer and dryer than poured concrete or concrete block.

Stronger

- ▶ Wood foundation walls are stronger than concrete block walls. A foundation wall's biggest challenge is resisting lateral forces rather than holding up the weight of the building.

Better

- ▶ Energy Efficiency: EPS panelized foundation panels have R-Values of 33. It would take 412" of concrete walls to equal.
- ▶ Design flexibility: EPS panelized foundation panels can be easily designed for any building type, size or shape.
- ▶ Treatment of a minimum of .60 lbs./ft³ of preservative retention meeting AWPA standard C22. The preservative treatment is effective in resisting damage from moisture and insects.

Easier

- ▶ Wood foundations for most homes and small commercial structures can be installed in a day, as opposed to at least 4 days for forming, pouring and curing.
- ▶ Panelized foundations allow ease of construction scheduling.
- ▶ Ease of finishing: panelized walls, attaching drywall, paneling and trim is made simpler.

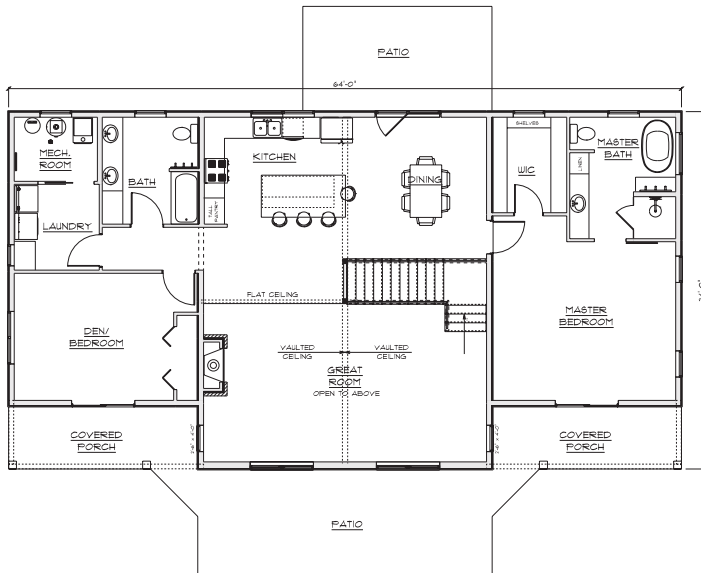


Cabin: Cypress

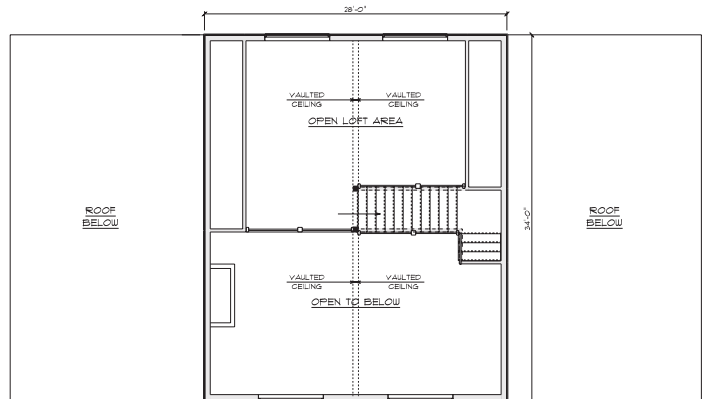
Style: Loft
Sq. Ft.: 2,630
Bedrooms: 2
Bathrooms: 2 full



Description: The Cypress is the quintessential lake home design! This design makes the most of a lake view by providing spectacular views from all rooms in the home. At the center of the design is an open loft area which allows unobstructed views from the kitchen and living area. A second story center loft area provides the perfect serene escape.



Main Level



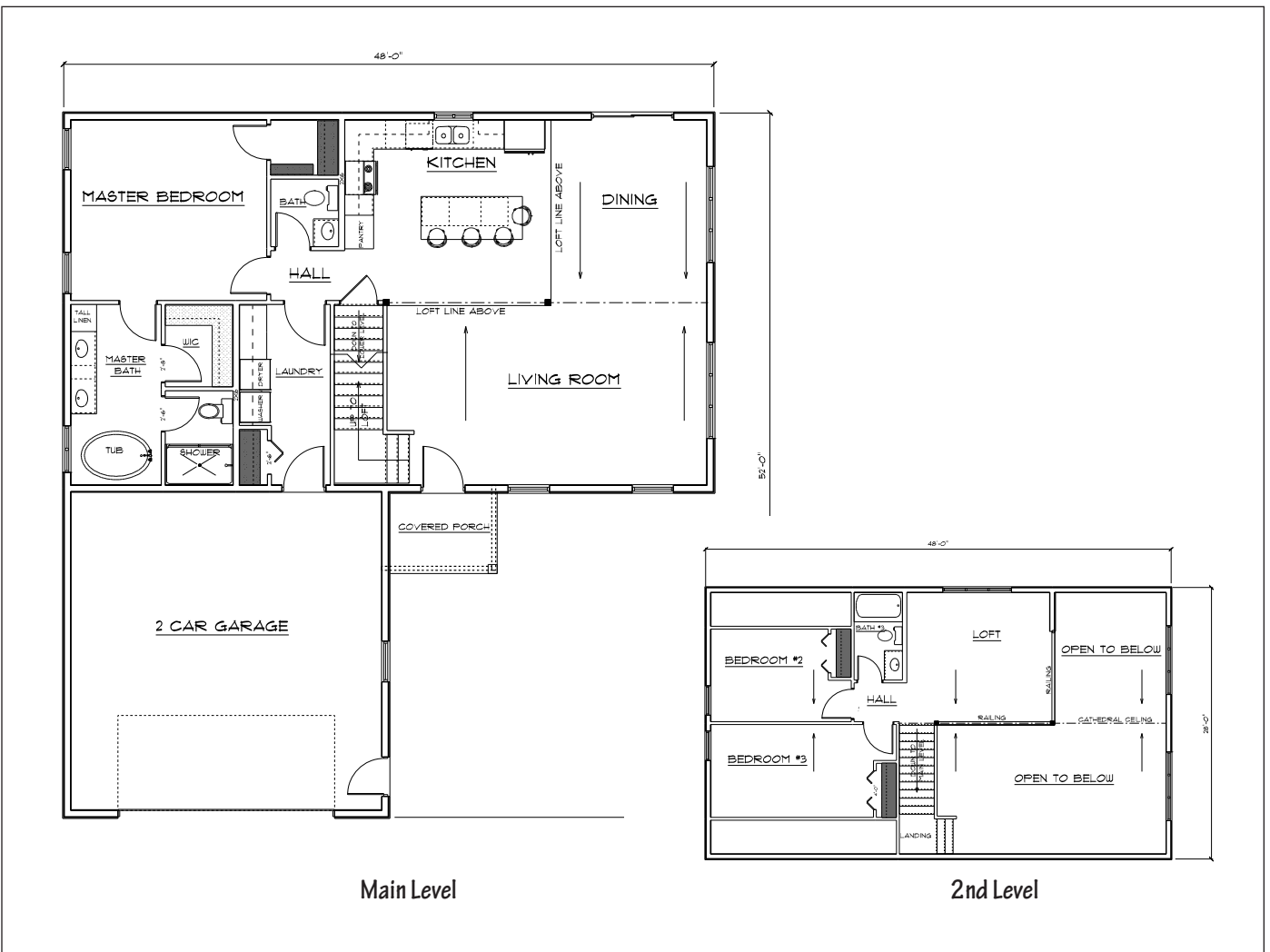
2nd Level

Cabin: Aspen



Style: Loft
 Sq. Ft.: 1,995
 Bedrooms: 3
 Bathrooms: 2 full

Description: This loft-style home is designed to maximize a view! The floor plan features an open, airy design with a second story loft to be a window on the world. Whether you choose a lakeshore, a mountain or your own acreage, the Aspen fits a variety of lifestyles.

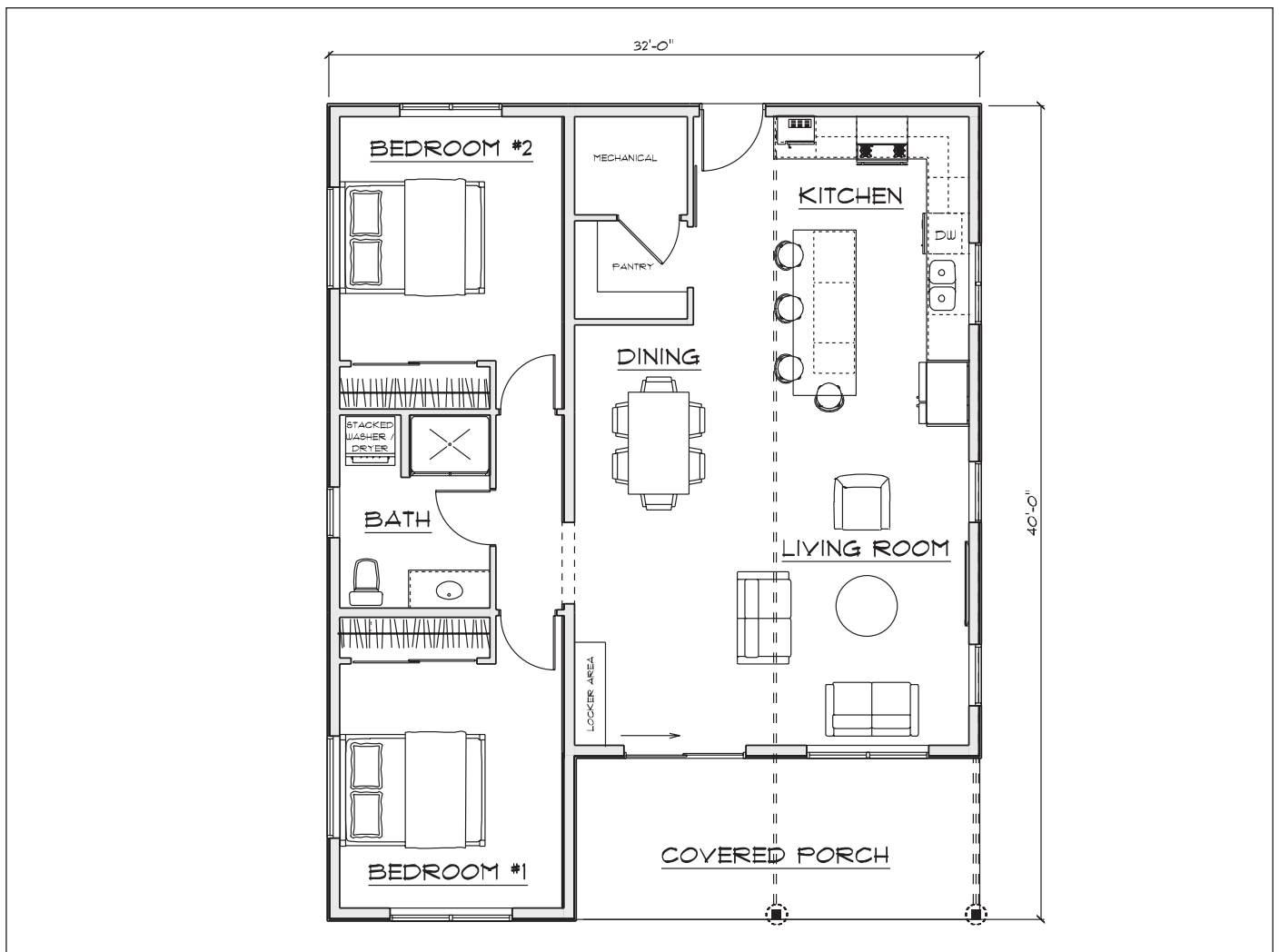


Cabin: Skylar Ridge



Style: Modern
Sq. Ft.: 1,780
Bedrooms: 2
Bathrooms: 1 full

Description: This modern design is at home in a subdivision or all by itself on a secluded lakeshore lot. It features an open cathedral design through-out which is tailor-made for using ultra-energy efficient SIP (Structural Insulated Panels) roof panels. The design maximizes both indoor and outdoor living space and is perfect for slab on grade construction.

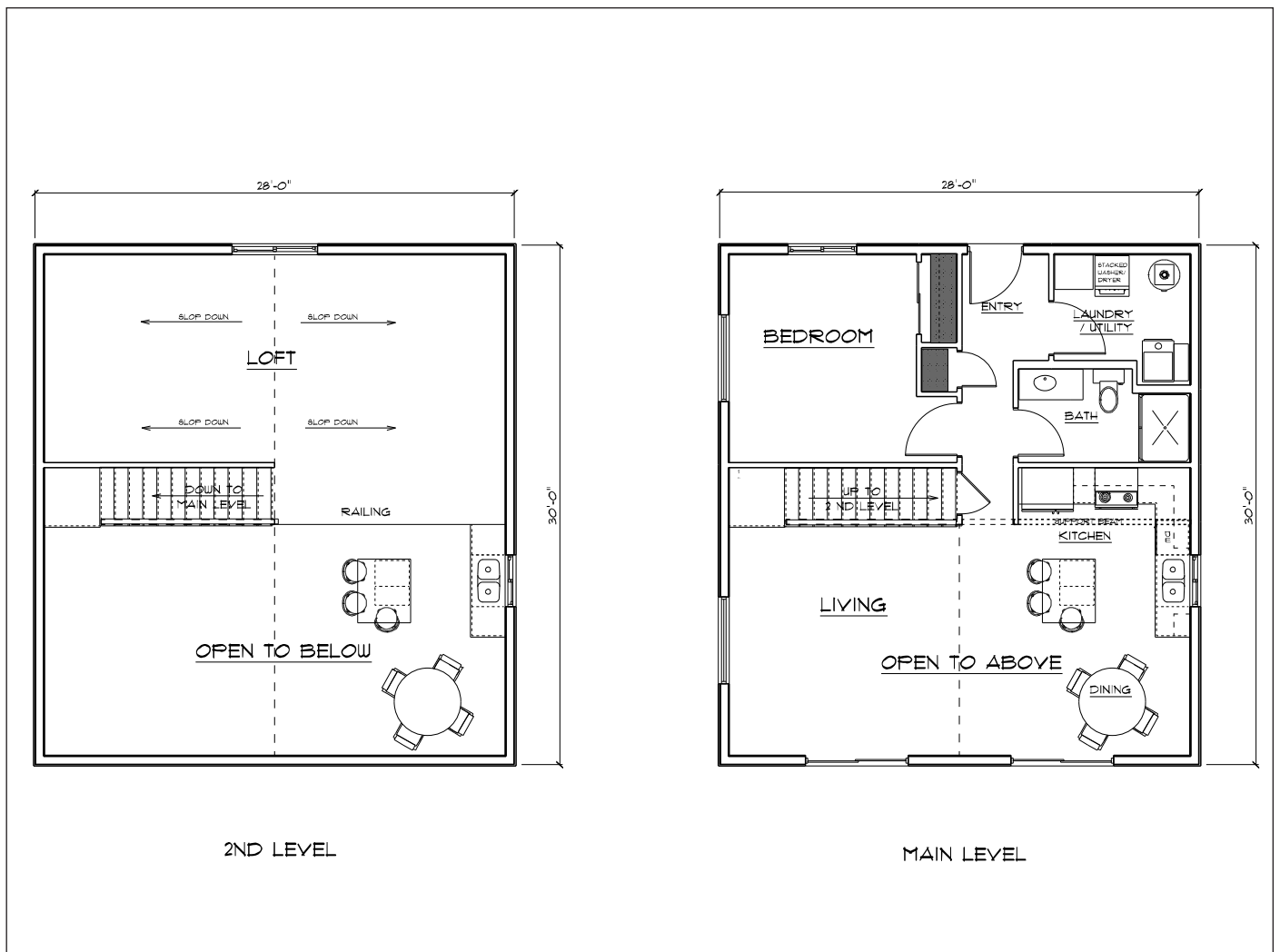


Cabin: Alpine



Style: Loft
 Sq. Ft.: 1,204
 Bedrooms: 1
 Bathrooms: 1 full

Description: This entry level, lofted cabin offers amazing flexibility. The second level loft area offers great flexibility, perfect for partitioned bedrooms, bunks or just open storage.

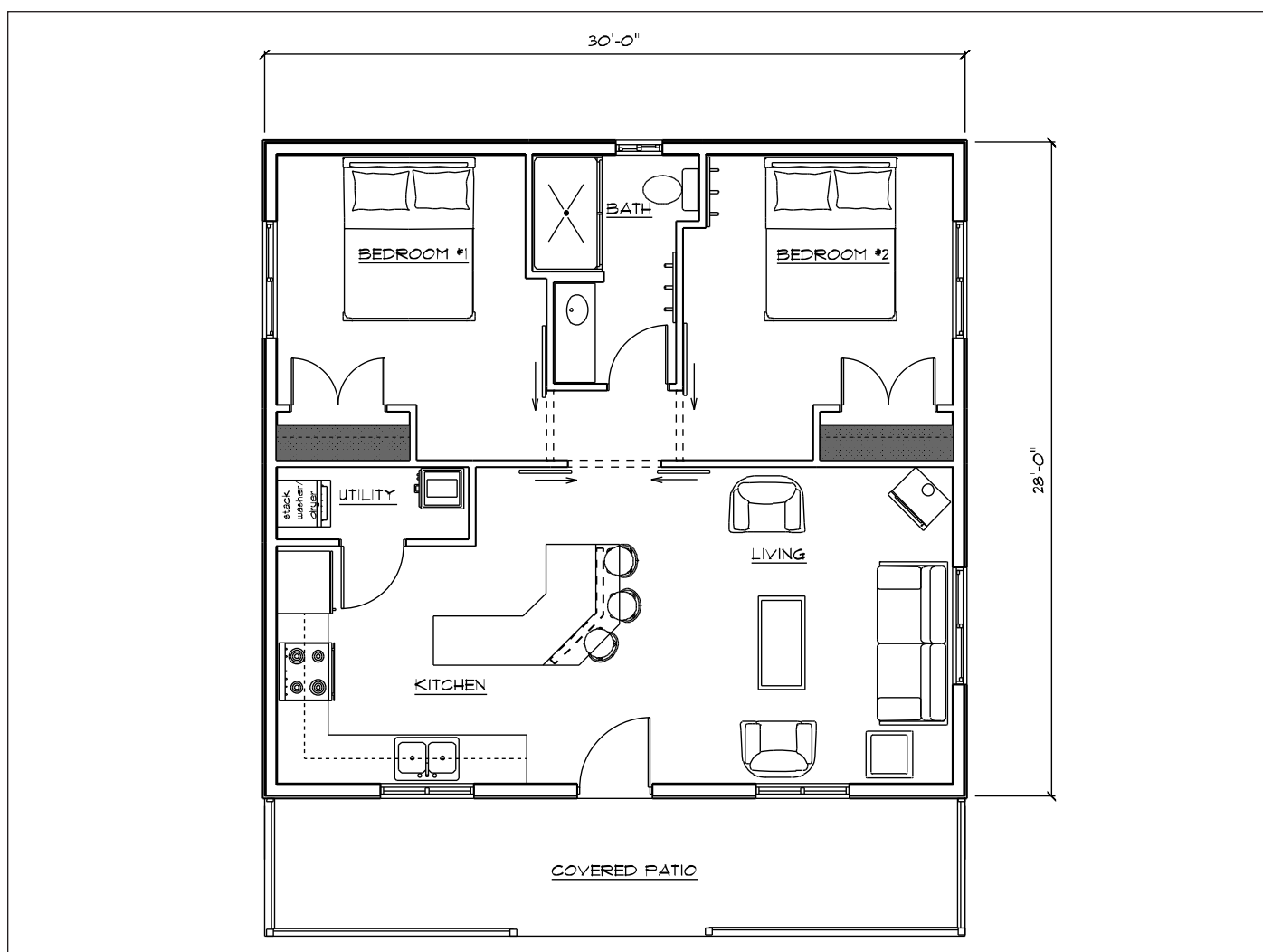


Cabin: Rushmore



Style: Cabin
Sq. Ft.: 840
Bedrooms: 2
Bathrooms: 1 full

Description: This cozy design features a mono-slope roof and covered porch for the perfect getaway.

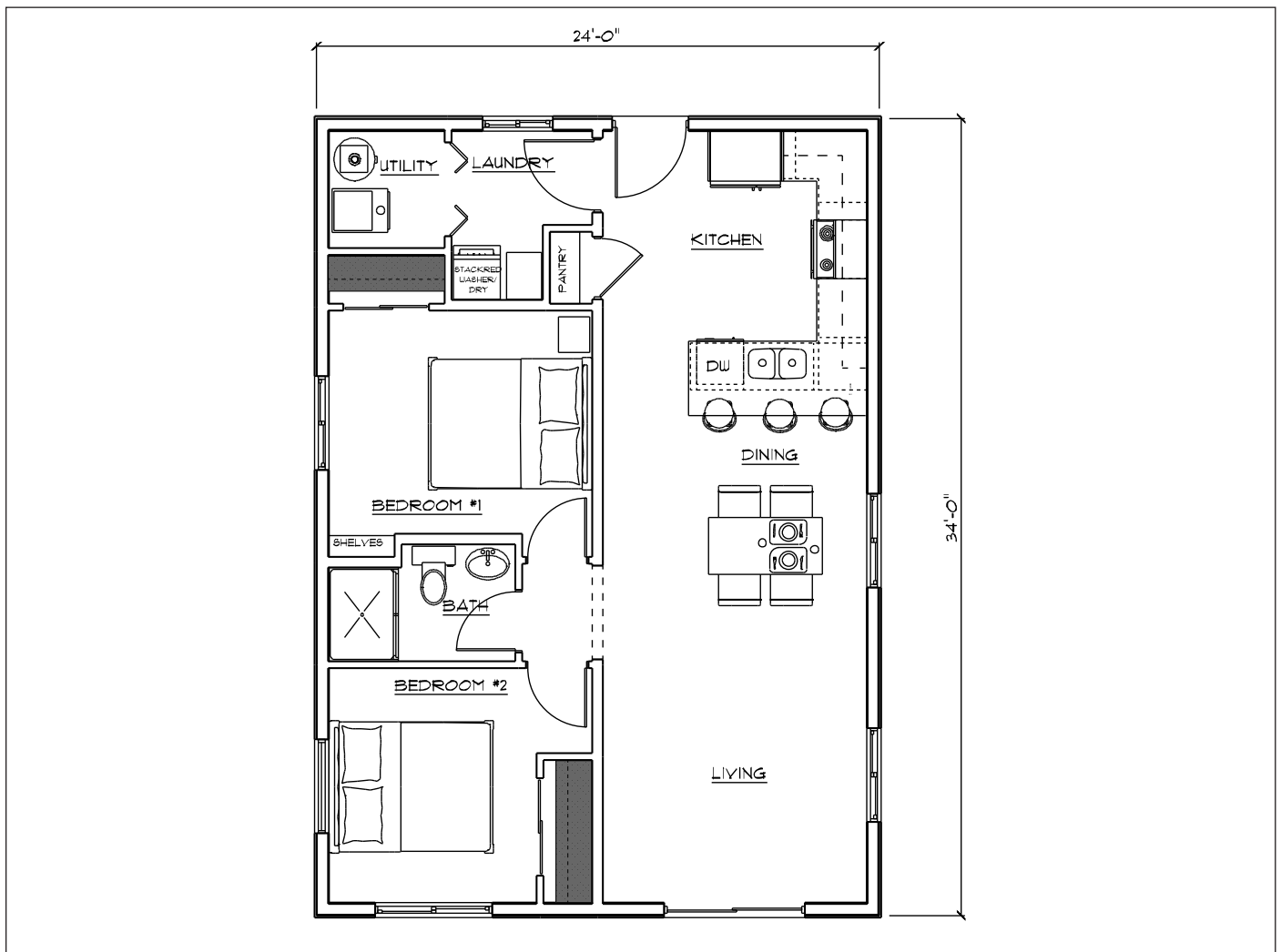


Cabin: Sheppards Glenn



Style: Cabin
Sq. Ft.: 825
Bedrooms: 2
Bathrooms: 1 full

Description: An amazing entry level cottage design with all the features you desire! The floor plan packs two bedrooms, a bath and a main floor utility area in under 900 square feet of living space.



SHOP & HOUSE = SHOUSE

Perfect Combinations

**WITHOUT
COMPROMISE**
Only from EPS

The commute to work from home is just a short inside walk when you combine a workshop with your new home. The flexibility of EPS building packages means it's easy to build for your unique lifestyle. For superior comfort and energy efficiency, combine a house with a shop or storage area built using Structural Insulated Panels (SIPs).



Call us for a local builder near you:

712-859-3219

epsbuildings.com



SIMPLY. BETTER. BUILDINGS.



Experience the
Difference

In A New Home Built by EPS

EPS has been manufacturing homes and other structures with Structural Insulated Panels since 1981. (SIPs) join high-performance rigid foam insulation to Oriented Strand Board (OSB) or plywood. The thickness of foam is adjusted to increase R-Value.

01 Lower
Ownership Costs.

02 Enhanced
Comfort.

03 Flexible,
Custom Designs.



Whatever design you are searching for, we can build it! From walls of windows, to vaulted ceilings or lofts, every EPS project is custom designed for your lifestyle.



Your new home is built at your site, by a trained and experienced professional. First, your home is manufactured using the most advanced technology.



Save energy in an EPS home! Structural Insulated Panels save up to 50% in energy costs and are as much as 15-times more air-tight than conventional construction.



EPS homes meet the goal of comfort. A new home built with Structural Insulated Panels reduce air movement and drafts, moisture, noise and helps keep dust and allergens from penetrating.



Phone: 712-859-3219

epsbuildings.com



100% Employee Owned—100% Committed to Quality

Graettinger, Iowa • Perryville, Missouri